

## TECHNISCHER KATALOG - LISTE DER STANDARDPRODUKTE

### ACHTUNG!

Die folgende Liste enthält nicht alle Wälzlager, die von SNR für industrielle Anwendungen hergestellt werden.

Für Informationen zum kompletten SNR-Lieferprogramm kontaktieren Sie bitte Ihren SNR-Ansprechpartner: SIPS - Dieter Döcker GmbH [www.sips.de](http://www.sips.de)

SNR übernimmt keine Haftung für trotz aller Sorgfalt bei der Erstellung des technischen Kataloges auftretende Fehler oder Auslassungen.

Wir behalten uns vollständige oder teilweise Änderungen an Produkten und Daten im vorliegenden Dokument im Rahmen unserer kontinuierlichen Forschungs- und Entwicklungsarbeit ohne vorherige Mitteilung vor.



SIPS – Dieter Döcker GmbH  
Helmholtzstr. 46-48  
41747 Viersen

Tel: 02162 9308-0  
Fax: 02162 15656

[info@sips.de](mailto:info@sips.de)  
[www.sips.de](http://www.sips.de)

## CATALOGO TECNICO - LISTA DE RODAMIENTOS STANDARD

*Este documento, adjunto al Catálogo Técnico SNR, le guiará para poder escoger un rodamiento SNR en las series normalizadas ISO.  
> Juntamente con las informaciones técnicas del Catálogo Técnico SNR, le permitirá escoger los rodamientos standard aquel que mejor conviene a su utilización.*

### **CUIDADO !**

*El programa ISO no contiene la totalidad de las referencias fabricadas por SNR para la industria.  
Vd podrá encontrarlas en el Catálogo General SNR (Programa de fabricación SNR) y en el CDROM SNR © -CATalog*

*Si se produjera un error u omisión en el contenido de este documento, a pesar del cuidado y del trabajo metucioso con que se ha establecido, la responsabilidad de SNR ROULEMENTS queda descartada.*

*Teniendo en cuenta nuestra política de continuo desarrollo y la búsqueda constante de la mejor relación producto/precio, nos reservamos el derecho, sin previo aviso, de modificar parte o la totalidad de los productos y especificaciones contenidas en este documento*

## CATALOGO TECNICO - LISTA DEI CUSCINETTI STANDARD

*Questo documento allegato al Catalogo Técnico SNR permette la scelta di un cuscinetto tra quelli delle serie normalizzate ISO.  
> Grazie alle informazioni contenute nel Catalogo Técnico SNR, con esso sarà possibile scegliere tra i cuscinetti standard quello più adatto al vostro utilizzo.*

### **ATTENZIONE !**

*Questo programma ISO non contiene l'intera gamma dei cuscinetti costruiti da SNR ROULEMENTS per il mercato industriale:  
La gamma completa si trova nel Catalogo Generale SNR (programma di fabbricazione SNR) e nel CDROM SNR © -CATalog*

*SNR ROULEMENTS non si assume alcuna responsabilità per eventuali errori od omissioni presenti nel Catalogo Técnico nonostante la cura avuta nella sua realizzazione.*

*In ragione di una politica di sviluppo continuo e di una costante ricerca del migliore rapporto prodotto/prezzo, SNR ROULEMENTS si riserva il diritto di modificare, senza preavviso, in parte o totalmente i prodotti e le specifiche presenti in questo documento che non ha valore contrattuale.*

# Content - Sommaire - Inhalt - Indice - Sommario

<i>Single-row radial ball bearings</i> <i>Roulements à une rangée de billes à contact radial</i> <i>Rillenkugellager, einreihig</i> <i>Rodamientos de una hilera de bolas de contacto radial</i> <i>Cuscinetti ad una corona di sfere a contatto radiale</i>	<i>p.6-19</i>
<i>Single-row angular contact ball bearings</i> <i>Roulements à une rangée de billes à contact oblique</i> <i>Schrägkugellager, einreihig</i> <i>Rodamientos de una hilera de bolas de contacto angular</i> <i>Cuscinetti ad una corona di sfere a contatto obliquo</i>	<i>p.20-23</i>
<i>Double-row radial ball bearings</i> <i>Roulements à deux rangées de billes à contact radial</i> <i>Rillenkugellager, zweireihig</i> <i>Rodamientos de doble hilera de bolas de contacto radial</i> <i>Cuscinetti a doppia corona di sfere a contatto radiale</i>	<i>p.24-25</i>
<i>Double-row angular contact ball bearings</i> <i>Roulements à deux rangées de billes à contact oblique</i> <i>Schrägkugellager, zweireihig</i> <i>Rodamientos de doble hilera de bolas de contacto angular</i> <i>Cuscinetti a doppia corona di sfere a contatto obliquo</i>	<i>p.26-33</i>
<i>Double-row self-aligning ball bearings</i> <i>Roulements à rotule sur billes</i> <i>Pendelkugellager</i> <i>Rodamientos de bolas a rótula</i> <i>Cuscinetti orientabili a sfere</i>	<i>p.34-43</i>
<i>Cylindrical roller bearings</i> <i>Roulements à rouleaux cylindriques</i> <i>Zylinderrollenlager</i> <i>Rodamientos de rodillos cilíndricos</i> <i>Cuscinetti a rulli cilindrici</i>	<i>p.44-51</i>
<i>Tapered roller bearings</i> <i>Roulements à rouleaux coniques</i> <i>Kegelrollenlager</i> <i>Rodamientos de rodillos cónicos</i> <i>Cuscinetti a rulli conici</i>	<i>p.52-61</i>

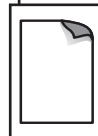
*Double-row spherical roller bearings*  
*Roulements à rotule sur rouleaux*  
*Pendelrollenlager*  
*Rodamientos de rodillos a rótula*  
*Cuscinetti orientabili a doppia corona di rulli* *p.62-85*

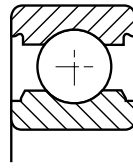
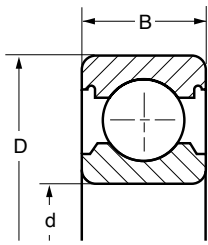
*Spherical roller thrust bearings*  
*Butées à rotule sur rouleaux*  
*Axial-Pendelrollenlager*  
*Rodamientos axiales de rodillos a rótula*  
*Reggispinte orientabili a rulli* *p.86-89*

*Single-direction ball thrust bearings*  
*Butées à billes à simple effet*  
*Axialkugellager*  
*Rodamientos axiales de bolas simple efecto*  
*Reggispinte a sfera a semplice effetto* *p.90-93*

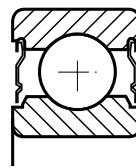
*Accessories*  
*Accessoires*  
*Zubehör*  
*Accesorios*  
*Accessori* *p.94-115*

This illustration that can be found at the bottom of each page refers to the corresponding pages of the Technical Catalog  
Ce pictogramme au bas de chaque page indique les pages correspondantes du Catalogue Technique  
Das Pictogramm am Fuß jeder Seite verweist auf den entsprechenden Abschnitt im technischen Katalog.  
Este dibujo al pie de cada página indica las páginas correspondientes del Catálogo Técnico  
Questo pittogramma in calce ad ogni pagina indica le pagine corrispondenti del Catalogo Tecnico

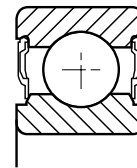




1



2

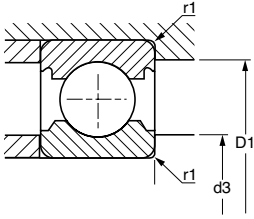


3

d mm	D mm	B mm	C		1 & 2		3	
			$10^3 N$	$C_o$ $10^3 N$	$min^{-1}$	$min^{-1}$	$min^{-1}$	
3	623	10	4	0,64	0,23	70 000	47 000	80 000
4	624	13	5	1,30	0,49	54 000	36 000	63 000
	634	16	5	1,88	0,68	45 000	25 000	53 000
5	625	16	5	1,88	0,68	47 000	31 000	55 000
	635	19	6	2,46	1,05	34 000	23 000	40 000
6	626	19	6	2,46	1,05	35 000	23 000	41 000
7	607	19	6	2,46	1,05	37 000	25 000	46 000
	627	22	7	3,30	1,36	32 000	21 000	37 000
8	608	22	7	3,30	1,36	34 000	23 000	42 000
9	609	24	7	3,65	1,64	30 000	20 000	37 000
	629	26	8	4,60	1,97	26 000	17 000	31 000
10	61800	19	5	1,83	0,92	34 000	22 000	42 000
	61900	22	6	2,70	1,27	31 000	20 000	38 000
	6000	26	8	4,60	1,97	27 000	18 000	34 000
	63000	26	12	4,60	1,97	18 000	15 000	27 000
	6200	30	9	6,00	2,65	23 000	15 000	27 000
	62200	30	14	6,00	2,65	21 000	13 000	25 000
	6300	35	11	8,10	3,45	13 000	13 000	13 000
	62300	35	17	8,10	3,45	13 000	13 000	13 000
12	61801	21	5	1,92	1,04	30 000	20 000	37 000
	61901	24	6	2,90	1,46	27 000	18 000	34 000
	6001	28	8	5,10	2,37	25 000	16 000	32 000
	63001	28	12	5,10	2,37	16 000	14 000	25 000
	6201	32	10	6,90	3,10	21 000	14 000	25 000
	62201	32	14	6,90	3,10	18 000	12 000	23 000
	6301	37	12	9,70	4,20	12 000	12 000	12 000
	62301	37	17	9,70	4,20	12 000	12 000	12 000

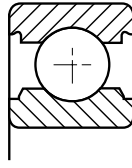
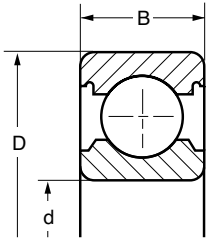


- *Single row radial ball bearings*
- *Roulements à une rangée de billes à contact radial*
- *Rillenkugellager, einreihig*
- *Rodamientos de una hilera de bolas de contacto radial*
- *Cuscinetti ad una corona di sfere a contatto radiale*

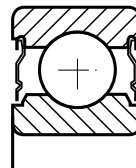


	<b>d3 min</b>	<b>D1 max</b>	<b>r1 max</b>		
	mm	mm	mm	*	kg
623	5,0	8,0	0,1		0,002
624	5,5	11,5	0,2		0,003
634	6,0	14,0	0,3		0,005
625	7,0	14,0	0,3		0,007
635	7,0	17,0	0,3		0,010
626	8,0	17,0	0,3		0,009
607	9,0	17,0	0,3		0,008
627	9,0	20,0	0,3		0,012
608	10,0	20,0	0,3		0,012
609	11,0	22,0	0,3		0,015
629	12,9	22,1	0,6		0,018
61800	12,0	17,0	0,3		0,005
61900	12,0	20,0	0,3		0,013
6000	12,0	24,0	0,3		0,019
63000	12,0	24,0	0,3		0,028
6200	14,0	26,0	0,6	R30	0,033
62200	14,0	26,0	0,6		0,048
6300	14,0	31,0	0,6	R35	0,054
62300	14,0	31,0	0,6		0,079
61801	14,0	19,0	0,3		0,006
61901	14,0	22,0	0,3		0,014
6001	14,0	26,0	0,3		0,022
63001	14,0	26,0	0,3		0,029
6201	16,0	28,0	0,6	R32	0,035
62201	16,0	28,0	0,6		0,049
6301	17,9	31,5	1,0	R37	0,060
62301	17,9	31,5	1,0		0,070

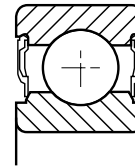
\* Accessories - Accessoires - Zubehör - Accesorios - Accessori: Seite 108



1



2

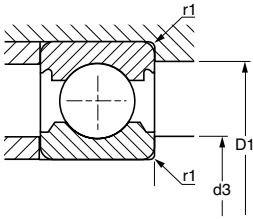



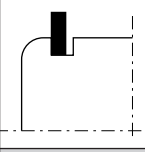

3

d mm	10YDxA20	D mm	B mm					
				C 10 <sup>3</sup> N	C <sub>0</sub> 10 <sup>3</sup> N	1 & 2 min <sup>-1</sup>	3 min <sup>-1</sup>	1 min <sup>-1</sup>
15	61802	24	5	2,08	1,26	25 000	17 000	31 000
	61902	28	7	4,35	2,25	23 000	15 000	28 000
	16002	32	8	5,60	2,85	22 000		26 000
	6002	32	9	5,60	2,85	21 000	14 000	26 000
	63002	32	13	5,60	2,85		14 000	
	6202	35	11	7,70	3,75	19 000	12 000	22 000
	62202	35	14	7,70	3,75		12 000	
	6302	42	13	11,30	5,40	16 000	11 000	20 000
	62302	42	17	11,30	5,40		11 000	
	17	61803	26	5	2,23	1,46	23 000	15 000
61903		30	7	4,60	2,55	21 000	14 000	26 000
16003		35	8	6,00	3,25	20 000		24 000
6003		35	10	6,00	3,25	19 000	12 000	24 000
63003		35	14	6,00	3,25		12 000	
6203		40	12	9,50	4,75	16 000	10 000	19 000
62203		40	16	9,50	4,75		11 000	
6303		47	14	13,60	6,60	14 000	9 300	17 000
62303		47	19	13,60	6,60		9 400	
6403		62	17	22,70	10,80	12 000		14 000
20	61804	32	7	2,95	1,87	19 500	11 500	23 500
	61904	37	9	6,40	3,70	17 500	11 000	20 500
	16004	42	8	9,40	5,00	17 000		20 000
	6004	42	12	9,40	5,00	16 000	10 000	20 000
	63004	42	16	9,40	5,00		10 000	
	6204	47	14	12,80	6,60	14 000	9 300	17 000
	62204	47	18	12,80	6,60		9 500	
	6304	52	15	15,90	7,90	12 000	8 600	15 000
	62304	52	21	15,90	7,90		8 600	
	6404	72	19	29,50	15,50	9 600		12 000
25	61805	37	7	4,30	2,95	17 000	9 800	20 000
	61905	42	9	7,00	4,55	15 000	15 000	18 000
	16005	47	8	10,10	5,90	14 000		17 000
	6005	47	12	10,10	5,80	14 000	9 300	17 000
	63005	47	16	10,10	5,80		9 300	
	6205	52	15	14,00	7,90	12 000	8 100	14 000
	62205	52	18	14,00	7,90		8 100	
	6305	62	17	23,60	12,10	10 000	7 100	13 000
	62305	62	24	23,60	12,10		7 100	
	6405	80	21	36,00	19,30	8 600		11 000



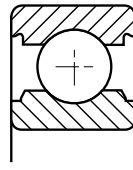
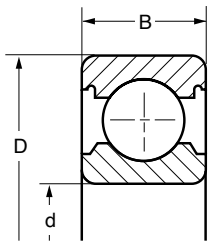
- Single row radial ball bearings
- Roulements à une rangée de billes à contact radial
- Rillenkugellager, einreihig
- Rodamientos de una hilera de bolas de contacto radial
- Cuscinetti ad una corona di sfere a contatto radiale



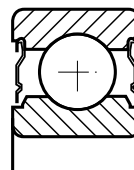
	<b>d3 min</b>	<b>D1 max</b>	<b>r1 max</b>		
	mm	mm	mm	*	kg
61802	17,0	22,0	0,3		0,007
61902	17,0	26,0	0,3		0,015
16002	17,0	30,0	0,3		0,026
6002	17,0	30,0	0,3	R32	0,030
63002	17,0	30,0	0,3		0,044
6202	19,0	31,2	0,6	R35	0,045
62202	19,0	31,2	0,6		0,053
6302	21,0	36,3	1,0	R42	0,083
62302	21,0	36,3	1,0		0,108
61803	19,0	24,0	0,3		0,008
61903	19,0	28,0	0,3		0,016
16003	19,0	33,0	0,3		0,032
6003	19,0	33,0	0,3	R35	0,038
63003	19,0	33,0	0,3		0,055
6203	21,0	36,0	0,6	R40	0,065
62203	21,0	36,0	0,6		0,082
6303	23,0	41,0	1,0	R47	0,113
62303	23,0	41,0	1,0		0,146
6403	25,0	54,0	1,1	R62	0,272
61804	22,2	29,8	0,3		0,018
61904	22,2	34,8	0,3		0,036
16004	22,0	40,0	0,3		0,049
6004	24,0	38,0	0,6	R42	0,068
63004	24,0	38,0	0,6		0,082
6204	26,0	41,3	1,0	R47	0,107
62204	26,0	41,3	1,0		0,131
6304	27,0	45,0	1,1	R52	0,145
62304	27,0	45,0	1,1		0,197
6404	28,0	64,0	1,1	R72	0,408
61805	27,2	34,8	0,3		0,022
61905	27,2	39,8	0,3		0,042
16005	27,0	45,0	0,3		0,056
6005	29,0	43,0	0,6	R47	0,080
63005	29,0	43,0	0,6		0,105
6205	31,0	46,5	1,0	R52	0,128
62205	31,0	46,5	1,0		0,148
6305	32,0	55,0	1,1	R62	0,225
62305	32,0	55,0	1,1		0,317
6405	35,0	70,0	1,5	R80	0,534

\* Accessories - Accessoires - Zubehör - Accesorios - Accessori: Seite 108

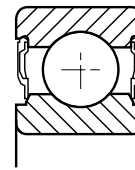




1



2

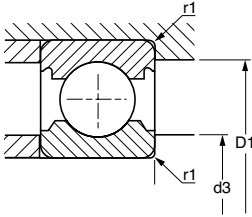



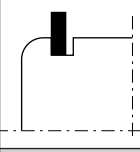

3

d mm	10YDxA20	D mm	B mm					
				C 10 <sup>3</sup> N	C <sub>0</sub> 10 <sup>3</sup> N	1 & 2 min <sup>-1</sup>	3 min <sup>-1</sup>	1 min <sup>-1</sup>
30	61806	42	7	4,55	3,40	14 500	8 400	17 500
	61906	47	9	7,20	4,35	13 500	13 500	16 000
	16006	55	9	11,20	7,40	11 000		14 000
	6006	55	13	13,20	8,30	12 000	7 800	15 000
	63006	55	19	13,20	8,30		7 800	
	6206	62	16	19,50	11,30	10 000	6 800	12 000
	62206	62	20	19,50	11,30		6 900	
	6306	72	19	28,00	15,80	8 900	5 900	10 000
	62306	72	27	28,00	15,80		6 000	
	6406	90	23	43,50	23,80	7 600		9 300
35	61807	47	7	4,75	3,80	13 000	7 300	15 500
	61907	55	10	9,60	5,90	11 500	8 600	14 000
	16007	62	9	13,90	9,30	11 000		13 000
	6007	62	14	16,00	10,30	10 000	6 800	12 000
	63007	62	20	16,00	10,30		6 800	
	6207	72	17	25,50	15,30	8 900	5 900	10 000
	62207	72	23	25,50	15,30		5 900	
	6307	80	21	33,50	19,20	8 000	5 300	9 800
	62307	80	31	33,50	19,20		5 300	
	6407	100	25	55,00	31,00	6 800		8 300
40	61808	52	7	4,90	4,15	11 500	6 500	14 000
	61908	62	12	12,20	7,70	10 000		12 000
	16008	68	9	15,20	11,10	10 000		12 000
	6008	68	15	16,80	11,50	9 200	6 100	11 000
	63008	68	21	16,80	11,50		6 100	
	6208	80	18	29,00	17,90	7 800	5 300	9 100
	62208	80	23	29,00	17,90		5 300	
	6308	90	23	40,50	23,90	7 000	4 700	8 300
	62308	90	33	40,50	23,90		4 800	
	6408	110	27	63,00	36,50	6 200		7 600
45	61809	58	7	6,60	5,90	10 500	5 800	12 500
	61909	68	12	14,10	10,90	9 100		11 000
	16009	75	10	17,50	12,70	8 800		11 000
	6009	75	16	21,00	15,20	8 300	5 600	10 000
	6209	85	19	32,50	20,50	7 300	4 900	8 800
	62209	85	23	32,50	20,50		4 900	
	6309	100	25	53,00	31,50	6 400	4 200	7 900
	6409	120	29	77,00	45,00	5 600		6 900

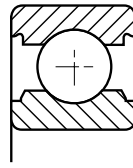
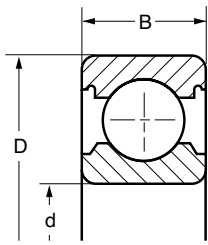


- Single row radial ball bearings
- Roulements à une rangée de billes à contact radial
- Rillenkugellager, einreihig
- Rodamientos de una hilera de bolas de contacto radial
- Cuscinetti ad una corona di sfere a contatto radiale

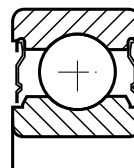


	<b>d3 min</b>	<b>D1 max</b>	<b>r1 max</b>		
	mm	mm	mm	*	kg
61806	32,2	39,8	0,3		0,026
61906	32,3	44,8	0,3		0,048
16006	32,0	53,0	0,3		0,082
6006	35,0	50,0	1,0	R55	0,116
63006	35,0	50,0	1,0		0,166
6206	36,0	56,0	1,0	R62	0,199
62206	36,0	56,0	1,0		0,236
6306	37,0	65,0	1,1	R72	0,346
62306	37,0	65,0	1,1		0,473
6406	40,0	80,0	1,5	R90	0,734
61807	37,2	44,8	0,3		0,029
61907	38,0	51,4	0,6		0,074
16007	37,0	60,0	0,3		0,107
6007	40,0	57,0	1,0	R62	0,153
63007	40,0	57,0	1,0		0,214
6207	42,0	65,0	1,1	R72	0,285
62207	42,0	65,0	1,1		0,375
6307	44,0	71,0	1,5	R80	0,446
62307	44,0	71,0	1,5		0,658
6407	45,0	90,0	1,5	R100	0,962
61808	42,2	49,8	0,3		0,035
61908	43,6	58,4	0,6		0,110
16008	42,0	66,0	0,3		0,126
6008	45,0	63,0	1,0	R68	0,192
63008	45,0	63,0	1,0		0,262
6208	47,0	73,0	1,1	R80	0,364
62208	47,0	73,0	1,1		0,460
6308	49,0	81,0	1,5	R90	0,612
62308	49,0	81,0	1,5		0,874
6408	52,0	98,0	2,0	R110	1,216
61809	47,6	55,4	0,3		0,039
61909	49,2	63,8	0,6		0,130
16009	49,0	71,0	0,6		0,162
6009	50,0	70,0	1,0	R75	0,243
6209	52,0	78,0	1,1	R85	0,404
62209	52,0	78,0	1,1		0,481
6309	54,0	91,0	1,5	R100	0,825
6409	57,0	108,0	2,0	R120	1,526

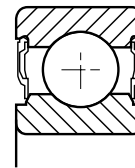
\* Accessories - Accessoires - Zubehör - Accesorios - Accessori: Seite 108



1



2

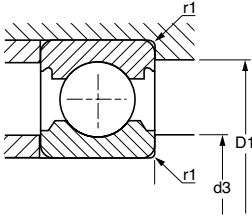



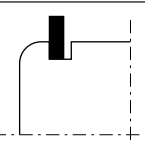

3

d mm	10YDxA20	D mm	B mm					
				C 10 <sup>3</sup> N	C <sub>0</sub> 10 <sup>3</sup> N	1 & 2 min <sup>-1</sup>	3 min <sup>-1</sup>	1 min <sup>-1</sup>
50	61810	65	7	6,80	6,30	9 300	5 100	11 000
	61910	72	12	13,40	9,60	7 900		9 500
	16010	80	10	16,00	13,20	8 200		9 700
	6010	80	16	21,80	16,60	7 600	5 000	9 400
	6210	90	20	35,00	23,20	6 800	4 500	8 200
	62210	90	23	35,00	23,20		4 500	
	6310	110	27	62,00	38,00	5 600	3 700	6 900
	6410	130	31	87,00	52,00	5 200		6 300
55	61811	72	9	9,10	8,40	8 400	4 700	10 000
	61911	80	13	16,60	14,10	7 700		9 200
	16011	90	11	19,40	16,20	7 300		8 600
	6011	90	18	28,50	21,30	6 800	4 500	8 500
	6211	100	21	43,50	29,00	6 100	4 100	7 400
	6311	120	29	71,00	44,50	5 300	3 500	6 500
	6411	140	33	100,00	62,00	4 800		5 800
	60	61812	78	10	11,80	11,10	7 700	4 300
61912		85	13	16,40	14,20	7 200		8 600
16012		95	11	20,00	17,50	6 800		8 100
6012		95	18	29,50	23,20	6 400	4 300	8 000
6212		110	22	52,00	36,00	5 500	3 600	6 600
6312		130	31	82,00	52,00	4 800	3 200	5 900
6412		150	35	104,00	68,00	4 200		5 100
65		61813	85	10	12,30	12,00	7 100	4 000
	61913	90	13	17,40	16,00	6 800		8 100
	16013	100	11	17,70	18,90	6 400		7 600
	6013	100	18	30,50	25,00	6 100	4 000	7 500
	6213	120	23	57,00	40,00	5 100	3 400	6 200
	6313	140	33	93,00	60,00	4 500	3 000	5 500
	6413	160	37	118,00	77,00	4 100		5 000
	70	61814	90	10	12,40	12,40	6 700	3 700
16014		110	13	30,00	25,50	6 000		7 000
6014		110	20	38,00	31,00	5 500	3 700	6 800
6214		125	24	62,00	44,00	4 900	3 200	5 800
6314		150	35	104,00	68,00	4 200	2 800	5 200
6414		180	42	143,00	103,00	3 700		4 500
75		61815	95	10	12,90	13,30	6 300	3 500
	61915	105	16	24,40	22,50	5 800		7 000
	16015	115	13	28,50	27,00	5 500		6 600
	6015	115	20	39,50	33,50	5 200	3 500	6 500
	6215	130	25	67,00	48,00	4 600	3 100	5 600
	6315	160	37	113,00	77,00	4 000	2 600	4 900
	6415	190	45	153,00	114,00	3 500		4 300

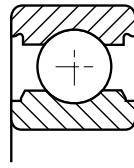
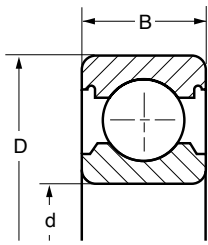


- Single row radial ball bearings
- Roulements à une rangée de billes à contact radial
- Rillenkugellager, einreihig
- Rodamientos de una hilera de bolas de contacto radial
- Cuscinetti ad una corona di sfere a contatto radiale

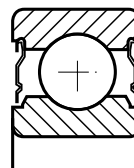


	d3 min	D1 max	r1 max		
	mm	mm	mm	*	kg
61810	52,6	62,4	0,3		0,052
61910	54,2	67,8	0,6		0,130
16010	54,0	76,0	0,6		0,180
6010	55,0	75,0	1,0	R80	0,265
6210	57,0	83,0	1,1	R90	0,453
62210	57,0	83,0	1,1		0,514
6310	61,0	99,0	2,0	R110	1,070
6410	64,0	116,0	2,1	R130	1,880
61811	57,6	69,4	0,3		0,084
61911	60,4	74,6	1,0		0,180
16011	59,0	86,0	0,6		0,266
6011	61,0	84,0	1,1	R90	0,388
6211	64,0	91,0	1,5	R100	0,603
6311	66,0	109,0	2,0	R120	1,347
6411	69,0	126,0	2,1	R140	2,302
61812	62,6	75,4	0,3		0,105
61912	65,4	79,6	1,0		0,190
16012	64,0	91,0	0,6		0,283
6012	66,0	89,0	1,1		0,411
6212	69,0	101,0	1,5	R110	0,785
6312	73,0	117,0	2,1	R130	1,680
6412	74,0	136,0	2,1	R150	2,870
61813	69,2	80,8	0,6		0,130
61913	70,4	84,6	1,0		0,200
16013	69,0	96,0	0,6		0,300
6013	71,0	94,0	1,1	R100	0,444
6213	74,0	111,0	1,5	R120	0,991
6313	78,0	127,0	2,1	R140	2,077
6413	79,0	146,0	2,1	R160	3,420
61814	74,2	85,8	0,6		0,140
16014	74,0	106,0	0,6		0,430
6014	76,0	104,0	1,1	R110	0,610
6214	79,0	116,0	1,5		1,055
6314	83,0	137,0	2,1		2,525
6414	86,0	164,0	3,0	R180	5,090
61815	79,2	90,8	0,6		0,150
61915	80,4	99,6	1,0		0,360
16015	79,0	111,0	0,6		0,463
6015	81,0	109,0	1,1	R115	0,640
6215	84,0	121,0	1,5	R130	1,190
6315	88,0	147,0	2,1	R160	3,031
6415	91,0	174,0	3,0	R190	5,880

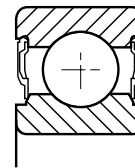
\* Accessories - Accessoires - Zubehör - Accesorios - Accessori: Seite 108



1



2

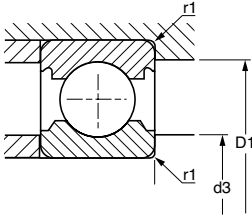



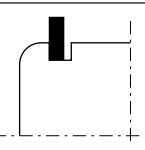

3

d mm	10YDxA20	D mm	B mm					
				C 10 <sup>3</sup> N	C <sub>0</sub> 10 <sup>3</sup> N	1 & 2 min <sup>-1</sup>	3 min <sup>-1</sup>	1 min <sup>-1</sup>
80	61816	100	10	13,00	13,80	6 000	3 300	7 200
	61916	110	16	25,00	23,90	5 500		6 600
	16016	125	14	32,00	29,50	5 100		6 100
	6016	125	22	47,50	39,50	4 800	3 200	6 000
	6216	140	26	73,00	53,00	4 400	2 900	5 200
	6316	170	39	123,00	86,00	3 700	2 500	4 600
	6416	200	48	163,00	125,00	3 300		4 000
85	61817	110	13	19,30	19,80	5 500	3 000	6 600
	6017	130	22	49,50	43,00	4 600	3 100	5 700
	6217	150	28	83,00	64,00	4 100	2 700	4 900
	6317	180	41	133,00	97,00	3 500	2 300	4 300
90	61818	115	13	15,50	20,50	5 200	2 900	6 300
	6018	140	24	58,00	49,50	4 300	2 800	5 300
	6218	160	30	96,00	71,00	3 800	2 600	4 600
	6318	190	43	143,00	107,00	3 300	2 200	4 100
95	61819	120	13	19,80	21,30	5 000	2 700	6 000
	6019	145	24	60,00	54,00	4 000	2 700	5 000
	6219	170	32	109,00	82,00	3 600	2 400	4 300
	6319	200	45	144,00	113,00	3 100	2 000	3 800
100	61820	125	13	20,10	22,00	4 800	2 600	5 700
	16020	150	16	44,00	44,50	4 200		5 000
	6020	150	24	60,00	54,00	4 000	2 700	5 000
	6220	180	34	122,00	93,00	3 400		4 100
	6320	215	47	164,00	135,00	2 900	1 900	3 600
105	61821	130	13	20,80	23,60	4 600	2 500	5 500
	6021	160	26	72,00	66,00	3 700	2 400	4 600
	6221	190	36	133,00	104,00	3 200	2 100	3 900
110	61822	140	16	28,00	30,50	4 300	2 300	5 100
	16022	170	19	57,00	57,00	3 700		4 500
	6022	170	28	82,00	73,00	3 600	2 300	4 400
	6222	200	38	144,00	117,00	3 100	2 000	3 700
	6322	240	50	189,00	165,00	2 600	1 700	3 200
120	61824	150	16	29,00	33,00	4 000	2 200	4 800
	16024	180	19	61,00	64,00	3 500		4 200
	6024	180	28	85,00	79,00	3 300	2 200	4 100
	6224	215	40	145,00	123,00	2 800	1 800	3 400
	6324	260	55	212,00	190,00	2 400	1 600	3 000

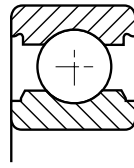
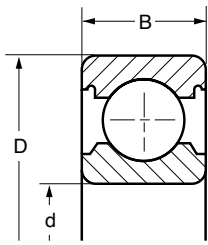


- Single row radial ball bearings
- Roulements à une rangée de billes à contact radial
- Rillenkugellager, einreihig
- Rodamientos de una hilera de bolas de contacto radial
- Cuscinetti ad una corona di sfere a contatto radiale

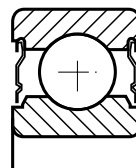


	<b>d3 min</b>	<b>D1 max</b>	<b>r1 max</b>		
	mm	mm	mm	*	kg
61816	84,2	95,2	0,6		0,155
61916	85,4	104,6	1,0		0,380
16016	84,0	121,0	0,6		0,611
6016	86,0	119,0	1,1	R125	0,870
6216	91,0	129,0	2,0	R140	1,397
6316	93,0	157,0	2,1	R170	3,605
6416	96,0	184,0	3,0	R200	8,070
61817	90,4	104,6	1,0		0,270
6017	91,0	124,0	1,1	R130	0,900
6217	96,0	139,0	2,0	R150	1,794
6317	99,0	166,0	3,0	R180	4,210
61818	95,4	109,6	1,0		0,280
6018	98,0	132,0	1,5	R140	1,175
6218	101,0	149,0	2,0	R160	2,134
6318	104,0	176,0	3,0	R190	4,910
61819	100,4	114,6	1,0		0,295
6019	103,0	137,0	1,5	R145	1,220
6219	108,0	157,0	2,1	R170	2,800
6319	109,0	186,0	3,0	R200	6,140
61820	105,4	119,6	1,0		0,310
16020	105,0	145,0	1,0		0,929
6020	108,0	142,0	1,5	R150	1,267
6220	113,0	167,0	2,1	R180	3,129
6320	114,0	201,0	3,0		7,560
61821	110,4	124,6	1,0		0,330
6021	114,0	151,0	2,0	R160	1,590
6221	118,0	177,0	2,1	R190	3,860
61822	115,4	134,6	1,0		0,500
16022	115,0	165,0	1,0		1,490
6022	119,0	161,0	2,0	R170	1,957
6222	123,0	187,0	2,1	R200	3,860
6322	124,0	226,0	3,0		10,300
61824	125,4	144,6	1,0		0,550
16024	125,0	175,0	1,0		1,600
6024	129,0	171,0	2,0	R180	2,090
6224	133,0	202,0	2,1		5,600
6324	134,0	246,0	3,0		12,800

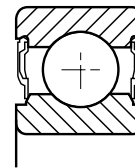
\* Accessories - Accessoires - Zubehör - Accesorios - Accessori: Seite 108



1



2

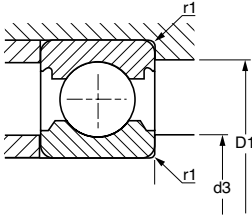



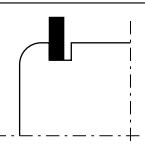

3

d		D	B					
				C	C <sub>o</sub>	1 & 2	3	1
mm		mm	mm	10 <sup>3</sup> N	10 <sup>3</sup> N	min <sup>-1</sup>	min <sup>-1</sup>	min <sup>-1</sup>
130	61826	165	18	38,00	43,00	3 600	2 000	4 400
	16026	200	22	79,00	82,00	3 200		3 800
	6026	200	33	106,00	101,00	3 000	2 000	3 700
	6226	230	40	167,00	146,00	2 600	1 700	3 000
	6326	280	58	229,00	214,00	2 200	1 400	2 700
140	61828	175	18	39,00	46,00	3 400	1 850	4 100
	16028	210	22	81,00	87,00	3 000		3 600
	6028	210	33	109,00	107,00	2 800	1 800	3 500
	6228	250	42	177,00	165,00	2 400	1 600	5 400
	6328	300	62	255,00	246,00	2 100	1 400	2 600
150	61830	190	20	51,00	60,00	3 100		3 800
	6030	225	35	123,00	124,00	2 600	1 700	3 300
	6230	270	45	176,00	168,00	2 200	1 400	2 700
	6330	320	65	280,00	290,00	1 900		2 400
160	61832	200	20	52,00	62,00	3 000		3 600
	16032	240	25	102,00	113,00	2 600		3 100
	6032	240	38	137,00	135,00	2 500		3 000
	6232	290	48	199,00	203,00	2 100		2 500
	6332	340	68	300,00	325,00	1 800		2 200
170	61834	215	22	61,00	73,00	2 800		3 300
	16034	260	28	123,00	136,00	2 400		2 900
	6034	260	42	168,00	172,00	2 300		2 800
	6234	310	52	212,00	224,00	2 000		2 400
180	61836	225	22	62,00	76,00	2 700		3 200
	16036	280	31	131,00	146,00	2 300		2 800
	6036	280	46	188,00	196,00	2 100		2 700
	6236	320	52	226,00	244,00	1 900		2 300
190	61838	240	24	69,00	85,00	2 500		3 000
	16038	290	31	149,00	167,00	2 200		2 600
	6038	290	46	195,00	213,00	2 000		2 500
	6238	340	55	255,00	280,00	1 800		2 100
200	61840	250	24	70,00	88,00	2 400		2 900
	16040	310	34	175,00	202,00	2 000		2 400
	6040	310	51	214,00	238,00	1 900		2 400
	6240	360	58	270,00	310,00	1 700		2 000
220	61844	270	24	73,00	97,00	2 200		2 600

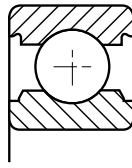
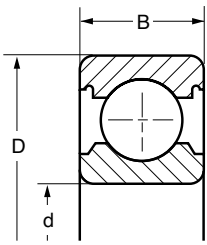


- Single row radial ball bearings
- Roulements à une rangée de billes à contact radial
- Rillenkugellager, einreihig
- Rodamientos de una hilera de bolas de contacto radial
- Cuscinetti ad una corona di sfere a contatto radiale

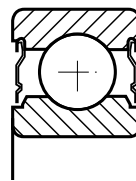


	<b>d3 min</b>	<b>D1 max</b>	<b>r1 max</b>		
	mm	mm	mm		kg
61826	137,6	157,4	1,1	R200	0,780
16026	136,0	194,0	1,0		2,420
6026	138,8	191,2	2,0		3,270
6226	144,0	216,0	3,0		6,220
6326	148,0	262,0	4,0		18,200
61828	147,6	167,4	1,1		0,830
16028	146,0	204,0	1,0		2,530
6028	149,0	201,0	2,0		3,570
6228	154,0	236,0	3,0		7,470
6328	157,0	283,0	3,0		22,100
61830	157,6	182,4	1,1		1,350
6030	159,0	216,0	2,1		4,380
6230	164,0	256,0	2,5		10,300
6330	167,0	303,0	3,0		26,600
61832	167,6	192,4	1,1		1,400
16032	167,0	233,0	1,5		3,770
6032	170,0	230,0	2,1		6,120
6232	174,0	276,0	2,5		14,300
6332	177,0	323,0	3,0		31,500
61834	177,6	207,4	1,1		1,600
16034	177,0	253,0	1,5		5,130
6034	180,0	250,0	2,1		8,270
6234	187,0	293,0	3,0		17,700
61836	187,6	217,4	1,1		2,000
16036	189,0	271,0	2,0		6,920
6036	190,0	270,0	2,1		10,700
6236	197,0	303,0	3,0		18,300
61838	199,0	231,0	1,5		2,700
16038	199,0	281,0	2,0		7,090
6038	200,0	280,0	2,1		11,270
6238	207,0	323,0	3,0		22,200
61840	209,0	241,0	1,5		2,700
16040	219,0	301,0	2,0		9,110
6040	210,0	300,0	2,1		14,430
6240	217,0	343,0	3,0		26,500
61844	229,0	261,0	1,5		2,900

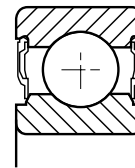









1



2

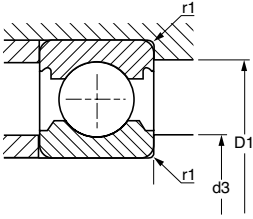



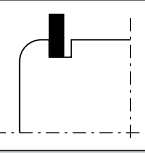

3

d mm	61848 61852 61856 61860 61864 61868 61872	D mm	B mm					
				C 10 <sup>3</sup> N	C <sub>o</sub> 10 <sup>3</sup> N	1 & 2 min <sup>-1</sup>	3 min <sup>-1</sup>	1 min <sup>-1</sup>
240	61848	300	28	92,00	120,00	2 000		2 400
260	61852	320	28	94,00	128,00	1 900		2 200
280	61856	350	33	126,00	170,00	1 700		2 000
300	61860	380	38	148,00	198,00	1 600		1 900
320	61864	400	38	154,00	213,00	1 500		1 800
340	61868	420	38	155,00	219,00	1 400		1 700
360	61872	440	38	160,00	234,00	1 350		1 600



- *Single row radial ball bearings*
- *Roulements à une rangée de billes à contact radial*
- *Rillenkugellager, einreihig*
- *Rodamientos de una hilera de bolas de contacto radial*
- *Cuscinetti ad una corona di sfere a contatto radiale*



	<b>d3 min</b>	<b>D1 max</b>	<b>r1 max</b>		
	mm	mm	mm		kg
61848	251,0	289,0	2,0		4,500
61852	271,0	309,0	2,0		4,800
61856	291,0	339,0	2,0		7,300
61860	314,0	366,0	2,1		10,500
61864	334,0	386,0	2,1		11,000
61868	354,0	406,0	2,1		11,500
61872	374,0	426,0	2,1		12,000