

TECHNISCHER KATALOG - LISTE DER STANDARDPRODUKTE

ACHTUNG !

Die folgende Liste enthält nicht alle Wälzlager, die von SNR für industrielle Anwendungen hergestellt werden.

Für Informationen zum kompletten SNR-Lieferprogramm kontaktieren Sie bitte Ihren SNR-Ansprechpartner: SIPS - Dieter Döcker GmbH www.sips.de

SNR übernimmt keine Haftung für trotz aller Sorgfalt bei der Erstellung des technischen Kataloges auftretende Fehler oder Auslassungen.

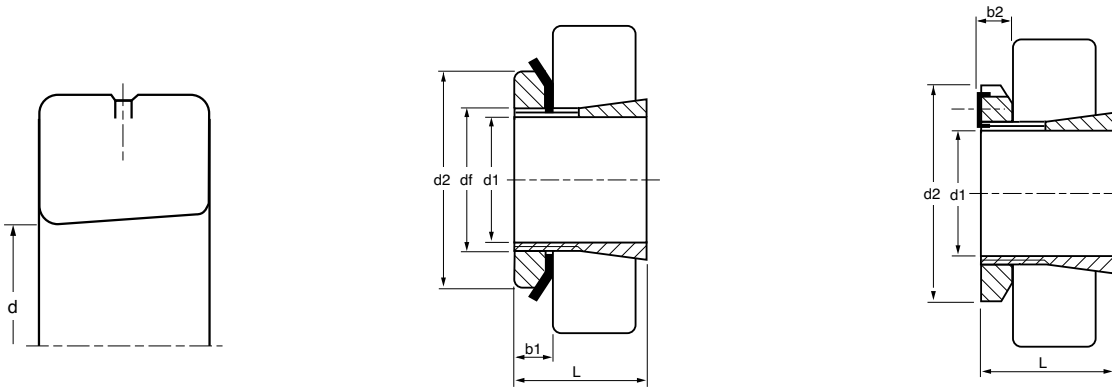
Wir behalten uns vollständige oder teilweise Änderungen an Produkten und Daten im vorliegenden Dokument im Rahmen unserer kontinuierlichen Forschungs- und Entwicklungsarbeit ohne vorherige Mitteilung vor.



SIPS – Dieter Döcker GmbH
Helmholtzstr. 46-48
41747 Viersen

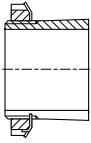
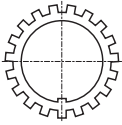
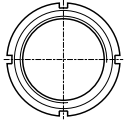

Tel: 02162 9308-0
Fax: 02162 15656

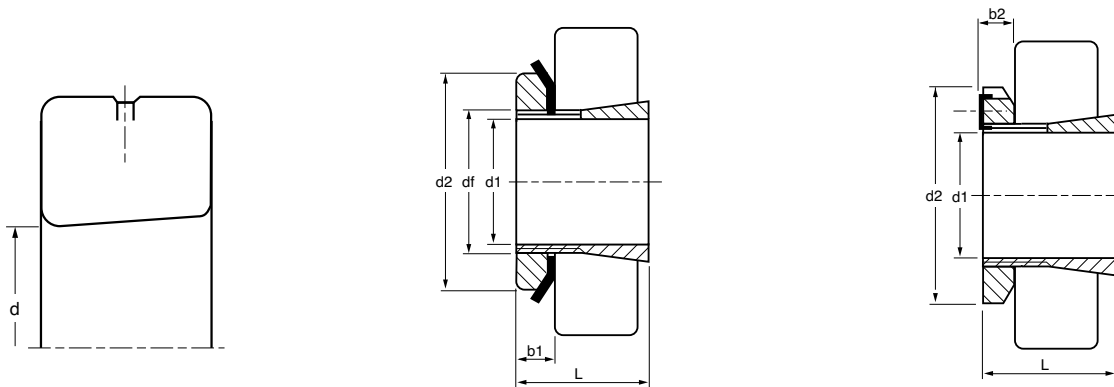
info@sips.de
www.sips.de



d1				d	d2	L	b1	b2	df	
mm				mm	mm	mm	mm	mm	mm	kg ≈
17	H 204	KM 4	MB 4	20	32	24	7		M20 X 1	0,040
	H 304	KM 4	MB 4	20	32	28	7		M20 X 2	0,050
20	H 205	KM 5	MB 5	25	38	26	8		M25 X 1,5	0,070
	H 305	KM 5	MB 5	25	38	29	8		M25 X 1,5	0,080
	H 2305	KM 5	MB 5	25	38	35	8		M25 X 1,5	0,090
25	H 206	KM 6	MB 6	30	45	27	8		M30 X 1,5	0,100
	H 306	KM 6	MB 6	30	45	31	8		M30 X 1,5	0,110
	H 2306	KM 6	MB 6	30	45	38	8		M30 X 1,5	0,130
30	H 207	KM 7	MB 7	35	52	29	9		M35 X 1,5	0,130
	H 307	KM 7	MB 7	35	52	35	9		M35 X 1,5	0,140
	H 2307	KM 7	MB 7	35	52	43	9		M35 X 1,5	0,170
35	H 208	KM 8	MB 8	40	58	31	10		M40 X 1,5	0,170
	H 308	KM 8	MB 8	40	58	36	10		M40 X 1,5	0,190
	H 2308	KM 8	MB 8	40	58	46	10		M40 X 1,5	0,220
40	H 209	KM 9	MB 9	45	65	33	11		M45 X 1,5	0,230
	H 309	KM 9	MB 9	45	65	39	11		M45 X 1,5	0,250
	H 2309	KM 9	MB 9	45	65	50	11		M45 X 1,5	0,280
45	H 210	KM 10	MB 10	50	70	35	12		M50 X 1,5	0,270
	H 310	KM 10	MB 10	50	70	42	12		M50 X 1,5	0,300
	H 2310	KM 10	MB 10	50	70	55	12		M50 X 1,5	0,360
50	H 211	KM 11	MB 11	55	75	37	12		M55 X 2	0,310
	H 311	KM 11	MB 11	55	75	45	12		M55 X 2	0,350
	H 2311	KM 11	MB 11	55	75	59	12		M55 X 2	0,420
55	H 212	KM 12	MB 12	60	80	38	13		M60 X 2	0,350
	H 312	KM 12	MB 12	60	80	47	13		M60 X 2	0,390
	H 2312	KM 12	MB 12	60	80	62	13		M60 X 2	0,480
60	H 213	KM 13	MB 13	65	85	40	14		M65 X 2	0,400
	H 313	KM 13	MB 13	65	85	50	14		M65 X 2	0,460
	H 2313	KM 13	MB 13	65	85	65	14		M65 X 2	0,560
	H 214	KM 14	MB 14	70	92	41	14		M70 X 2	0,590
	H 314	KM 14	MB 14	70	92	52	14		M70 X 2	0,720
	H 2314	KM 14	MB 14	70	92	68	14		M70 X 2	0,900
65	H 215	KM 15	MB 15	75	98	43	15,0		M75 X 2	0,710
	H 315	KM 15	MB 15	75	98	55	15,0		M75 X 2	0,830
	H 2315	KM 15	MB 15	75	98	73	15,0		M75 X 2	1,050

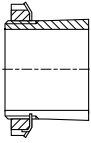
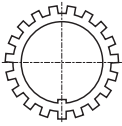
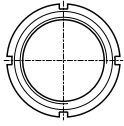

- *Accessories*
- *Accessoires*
- *Zubehör*
- *Accesorios*
- *Accessori*

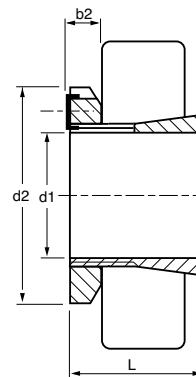
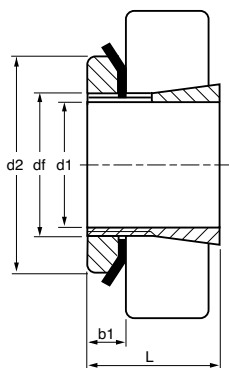
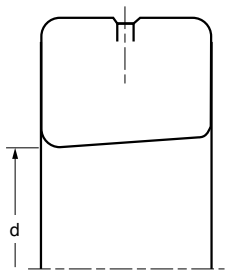
						
H 204 H 304	KM 4 KM 4	MB 4 MB 4	1204 K 1304 K	2204 K		
H 205 H 305 H 2305	KM 5 KM 5 KM 5	MB 5 MB 5 MB 5	1205 K 1305 K	2205 K 2305 K	21305 K	22205 K
H 206 H 306 H 2306	KM 6 KM 6 KM 6	MB 6 MB 6 MB 6	1206 K 1306 K	2206 K 2306 K	21306 K	22206 K
H 207 H 307 H 2307	KM 7 KM 7 KM 7	MB 7 MB 7 MB 7	1207 K 1307 K	2207 K 2307 K	21307 K	22207 K
H 208 H 308 H 2308	KM 8 KM 8 KM 8	MB 8 MB 8 MB 8	1208 K 1308 K	2208 K 2308 K	21308 K 22308 K	22208 K
H 209 H 309 H 2309	KM 9 KM 9 KM 9	MB 9 MB 9 MB 9	1209 K 1309 K	2209 K 2309 K	21309 K 22309 K	22209 K
H 210 H 310 H 2310	KM 10 KM 10 KM 10	MB 10 MB 10 MB 10	1210 K 1310 K	2210 K 2310 K	21310 K 22310 K	22210 K
H 211 H 311 H 2311	KM 11 KM 11 KM 11	MB 11 MB 11 MB 11	1211 K 1311 K	2211 K 2311 K	21311 K 22311 K	22211 K
H 212 H 312 H 2312	KM 12 KM 12 KM 12	MB 12 MB 12 MB 12	1212 K 1312 K	2212 K 2312 K	21312 K 22312 K	22212 K
H 213 H 313 H 2313	KM 13 KM 13 KM 13	MB 13 MB 13 MB 13	1213 K	2213 K 2313 K	21313 K 22313 K	22213 K
H 214 H 314 H 2314	KM 14 KM 14 KM 14	MB 14 MB 14 MB 14	1214 K		21314 K	22214 K 22314 K
H 215 H 315 H 2315	KM 15 KM 15 KM 15	MB 15 MB 15 MB 15	1215 K 1315 K	2215 K 2315 K	21315 K 22315 K	22215 K



d1				d	d2	L	b1	b2	df	
mm				mm	mm	mm	mm	mm	mm	kg ≈
70	H 216	KM 16	MB 16	80	105	46	17,0		M80 X 2	0,880
	H 316	KM 16	MB 16	80	105	59	17,0		M80 X 2	1,030
	H 2316	KM 16	MB 16	80	105	78	17,0		M80 X 2	1,280
75	H 217	KM 17	MB 17	85	110	50	18,0		M85 X 2	1,020
	H 317	KM 17	MB 17	85	110	63	18,0		M85 X 2	1,180
	H 2317	KM 17	MB 17	85	110	82	18,0		M85 X 2	1,450
80	H 218	KM 18	MB 18	90	120	52	18,0		M90 X 2	1,190
	H 318	KM 18	MB 18	90	120	65	18,0		M90 X 2	1,370
	H 2318	KM 18	MB 18	90	120	86	18,0		M90 X 2	1,690
85	H 219	KM 19	MB 19	95	125	55	19,0		M95 X 2	1,370
	H 319	KM 19	MB 19	95	125	68	19,0		M95 X 2	1,560
	H 2319	KM 19	MB 19	95	125	90	19,0		M95 X 2	1,920
90	H 220	KM 20	MB 20	100	130	58	20,0		M100 X 2	1,490
	H 320	KM 20	MB 20	100	130	71	20,0		M100 X 2	1,690
	H 2320	KM 20	MB 20	100	130	97	20,0		M100 X 2	2,150
	H 3120	KM 20	MB 20	100	130	76	20,0		M100 X 2	1,800
100	H 222	KM 22	MB 22	110	145	63	21,0		M110 X 2	1,930
	H 322	KM 22	MB 22	110	145	77	21,0		M110 X 2	2,180
	H 2322	KM 22	MB 22	110	145	105	21,0		M110 X 2	2,740
	H 3122	KM 22	MB 22	110	145	81	21,0		M110 X 2	2,250
110	H 2324	KM 24	MB 24	120	155	112	22,0		M120 X 2	3,190
	H 3024	KML 24	MBL 24	120	145	72	22,0		M120 X 2	1,930
	H 3124	KM 24	MB 24	120	155	88	22,0		M120 X 2	2,640
115	H 2326	KM 26	MB 26	130	165	121	23,0		M130 X 3	4,600
	H 3026	KML 26	MBL 26	130	155	80	23,0		M130 X 3	2,850
	H 3126	KM 26	MB 26	130	165	92	23,0		M130 X 3	3,660
125	H 2328	KM 28	MB 28	140	180	131	24,0		M140 X 2	5,550
	H 3028	KML 28	MBL 28	140	165	82	24,0		M140 X 2	3,160
	H 3128	KM 28	MB 28	140	180	97	24,0		M140 X 2	4,340
135	H 2330	KM 30	MB 30	150	195	139	26,0		M150 X 2	6,630
	H 3030	KML 30	MBL 30	150	180	87	26,0		M150 X 2	3,890
	H 3130	KM 30	MB 30	150	195	111	26,0		M150 X 2	5,520
140	H 2332	KM 32	MB 32	160	210	147	28,0		M160 X 3	9,140
	H 3032	KML 32	MBL 32	160	190	93	27,5		M160 X 3	5,210
	H 3132	KM 32	MB 32	160	210	119	28,0		M160 X 3	7,670

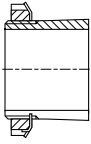
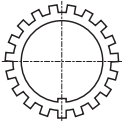
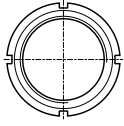

- *Accessories*
- *Accessoires*
- *Zubehör*
- *Accessorios*
- *Accessori*

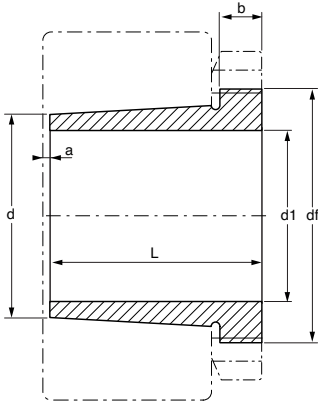
						
H 216 H 316 H 2316	KM 16 KM 16 KM 16	MB 16 MB 16 MB 16	1216 K	2216 K 2316 K	21316 K 22316 K	22216 K
H 217 H 317 H 2317	KM 17 KM 17 KM 17	MB 17 MB 17 MB 17	1217 K 1317 K	2217 K 2317 K	21317 K 22317 K	22217 K
H 218 H 318 H 2318	KM 18 KM 18 KM 18	MB 18 MB 18 MB 18	1218 K	2218 K 2318 K	21318 K 22318 K	22218 K
H 219 H 319 H 2319	KM 19 KM 19 KM 19	MB 19 MB 19 MB 19	1219 K	2219 K 2319 K	22219 K 22319 K	
H 220 H 320 H 2320 H 3120	KM 20 KM 20 KM 20 KM 20	MB 20 MB 20 MB 20 MB 20	1220 K 1320 K	2220 K	22220 K 22320 K 23120 K	23220 K
H 222 H 322 H 2322 H 3122	KM 22 KM 22 KM 22 KM 22	MB 22 MB 22 MB 22 MB 22	1222 K 1322 K	2222 K	22222 K 22322 K 23122 K	23022 K 23222 K
H 2324 H 3024 H 3124	KM 24 KML 24 KM 24	MB 24 MBL 24 MB 24			22324 K 23024 K 22224 K	23224 K 23124 K
H 2326 H 3026 H 3126	KM 26 KML 26 KM 26	MB 26 MBL 26 MB 26			22326 K 23026 K 22226 K	23226 K 23126 K
H 2328 H 3028 H 3128	KM 28 KML 28 KM 28	MB 28 MBL 28 MB 28			22328 K 23028 K 22228 K	23228 K 23128 K
H 2330 H 3030 H 3130	KM 30 KML 30 KM 30	MB 30 MBL 30 MB 30			22330 K 23030 K 22230 K	23230 K 23130 K
H 2332 H 3032 H 3132	KM 32 KML 32 KM 32	MB 32 MBL 32 MB 32			22332 K 23032 K 22232 K	23232 K 23132 K



d1				d	d2	L	b1	b2	df	
mm				mm	mm	mm	mm	mm	mm	kg ≈
150	H 2334	KM 34	MB 34	170	220	154	29,0		M170 X 3	10,200
	H 3034	KML 34	MBL 34	170	200	101	28,5		M170 X 3	5,990
	H 3134	KM 34	MB 34	170	220	122	29,0		M170 X 3	8,380
160	H 2336	KM 36	MB 36	180	230	161	30,0		M180 X 3	11,300
	H 3036	KML 36	MBL 36	180	210	109	29,5		M180 X 3	6,830
	H 3136	KM 36	MB 36	180	230	131	30,0		M180 X 3	9,500
170	H 2338	KM 38	MB 38	190	240	169	31,0		M190 X 3	12,600
	H 3038	KML 38	MBL 38	190	220	112	30,5		M190 X 3	7,450
	H 3138	KM 38	MB 38	190	240	141	31,0		M190 X 3	10,800
180	H 2340	KM 40	MB 40	200	250	176	32,0		M200 X 3	13,900
	H 3040	KML 40	MBL 40	200	240	120	31,5		M200 X 3	9,190
	H 3140	KM 40	MB 40	200	250	150	32,0		M200 X 3	12,100
200	H 2344 H	HM 44T	MB 44	220	280	186	35,0		TR200 X 4	17,000
	H 3044 H	HM 3044	MS 3044	220	260	128	30,0	41	TR200 X 4	10,300
	H 3144	HM 44T	MB 44	220	280	161	35,0		TR200 X 4	14,700
220	H 2348 H	HM 48T	MB 48	240	300	199	37,0		TR240 X 4	20,000
	H 3048 H	HM 3048	MS 3048	240	290	133	34,0	46	TR240 X 4	13,200
	H 3148 H	HM 48T	MB 48	240	300	172	37,0		TR240 X 4	17,600
240	H 2352 H	HM 52T	MB 52	260	330	211	39,0		TR260 X 4	24,500
	H 3052 H	HM 3052	MS 3052	260	310	147	34,0	46	TR260 X 4	15,300
	H 3152 H	HM 52T	MB 52	260	330	190	39,0		TR260 X 4	22,300
260	H 2356 H	HM 56T	MB 56	280	350	224	41,0		TR280 X 4	28,400
	H 3056 H	HM 3056	MS 3056	280	330	152	38,0	50	TR280 X 4	17,700
	H 3156 H	HM 56T	MB 56	280	350	195	41,0		TR280 X 4	25,100
280	H 3060 H	HM 3060	MS 3060	300	360	168	42,0	54	TR300 X 4	22,800
	H 3160 H	HM 3160	MS 3160	300	380	208	40,0	53	TR300 X 4	30,200
	H 3260 H	HM 3160	MS 3160	300	380	240	40,0	53	TR300 X 4	34,100
300	H 3064 H	HM 3064	MS 3064	320	380	171	42,0	55	TR320 X 5	24,600
	H 3164 H	HM 3164	MS 3164	320	400	226	42,0	56	TR320 X 5	34,900
320	H 3068 H	HM 3068	MS 3068	340	400	187	45,0	58	TR320 X 5	28,700
	H 3168 H	HM 3168	MS 3168	340	440	254	55,0	72	TR320 X 5	50,000
340	H 3072 H	HM 3072	MS 3072	360	420	188	45,0	58	TR360 X 5	30,500
	H 3172 H	HM 3172	MS 3172	360	460	259	58,0	75	TR360 X 5	56,000
360	H 3076 H	HM 3076	MS 3076	380	450	193	48,0	62	TR380 X 5	35,800
380	H 3080 H	HM 3080	MS 3080	380	470	210	52,0	66	TR400 X 5	41,300

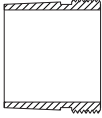
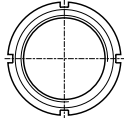

- *Accessories*
- *Accessoires*
- *Zubehör*
- *Accesorios*
- *Accessori*

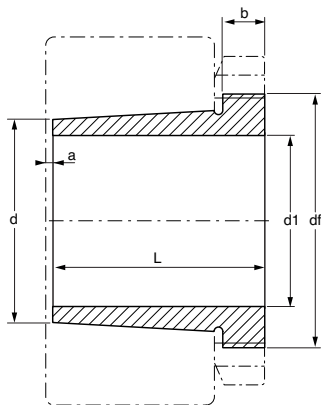
						
H 2334 H 3034 H 3134	KM 34 KML 34 KM 34	MB 34 MBL 34 MB 34			22334 K 23034 K 22234 K	23234 K 23134 K
H 2336 H 3036 H 3136	KM 36 KML 36 KM 36	MB 36 MBL 36 MB 36			22336 K 23036 K 22236 K	23236 K 23136 K
H 2338 H 3038 H 3138	KM 38 KML 38 KM 38	MB 38 MBL 38 MB 38			22338 K 23038 K 22238 K	23238 K 23138 K
H 2340 H 3040 H 3140	KM 40 KML 40 KM 40	MB 40 MBL 40 MB 40			22340 K 23040 K 22240 K	23240 K 23140 K
H 2344 H H 3044 H H 3144	HM 44T HM 3044 HM 44T	MB 44 MS 3044 MB 44			22344 K 23044 K 22244 K	23244 K 23144 K
H 2348 H H 3048 H H 3148 H	HM 48T HM 3048 HM 48T	MB 48 MS 3048 MB 48			22348 K 23048 K 23148 K	23248 K
H 2352 H H 3052 H H 3152 H	HM 52T HM 3052 HM 52T	MB 52 MS 3052 MB 52			23252 K 23052 K 23152 K	
H 2356 H H 3056 H H 3156 H	HM 56T HM 3056 HM 56T	MB 56 MS 3056 MB 56			22356 K 23056 K 23156 K	23256 K
H 3060 H H 3160 H H 3260 H	HM 3060 HM 3160 HM 3160	MS 3060 MS 3160 MS 3160			23060 K 23160 K 23260 K	
H 3064 H H 3164 H	HM 3064 HM 3164	MS 3064 MS 3164			23064 K 23164 K	
H 3068 H H 3168 H	HM 3068 HM 3168	MS 3068 MS 3168			23068 K 23168 K	
H 3072 H H 3172 H	HM 3072 HM 3172	MS 3072 MS 3172			23072 K 23172 K	
H 3076 H	HM 3076	MS 3076			23076 K	
H 3080 H	HM 3080	MS 3080			23080 K	



d1			d	L	a	b	df	
mm			mm	mm	mm	mm	mm	kg
35	AH 308	KM 9	40	29	3	6	M45 X 1,5	0,090
	AH 2308	KM 9	40	40	3	7	M45 X 1,5	0,128
40	AH 309	KM 10	45	31	3	6	M50 X 1,5	0,109
	AH 2309	KM 10	45	44	3	7	M50 X 1,5	0,164
45	AHX 310	KM 11	50	35	3	7	M55 X 2	0,137
	AHX 2310	KM 11	50	50	3	9	M55 X 2	0,209
50	AHX 311	KM 12	55	37	3	7	M60 X 2	0,161
	AHX 2311	KM 12	55	54	3	10	M60 X 2	0,253
55	AHX 312	KM 13	60	40	3	8	M65 X 2	0,189
	AHX 2312	KM 13	60	58	3	11	M65 X 2	0,297
60	AH 313 G	KM 14	65	42	3	8	M70 X 2	0,253
	AH 2313 G	KM 14	65	61	3	12	M70 X 2	0,395
65	AH 314 G	KM 15	70	43	4	8	M75 X 2	0,280
	AHX 2314 G	KM 15	70	64	4	12	M75 X 2	0,466
70	AH 315 G	KM 17	75	45	4	8	M85 X 2	0,313
	AHX 2315 G	KM 16	75	68	4	12	M80 X 2	0,534
75	AH 316	KM 18	80	48	4	8	M90 X 2	0,365
	AHX 2316	KM 18	80	71	4	12	M90 X 2	0,597
80	AHX 317	KM 19	85	52	4	9	M95 X 2	0,429
	AHX 2317	KM 19	85	74	4	13	M95 X 2	0,670
85	AHX 318	KM 20	90	53	4	9	M100 X 2	0,461
	AHX 3218	KM 20	90	63	4	10	M100 X 2	0,576
	AHX 2318	KM 20	90	79	4	14	M100 X 2	0,779
90	AHX 319	KM 21	95	57	4	10	M105 X 2	0,532
	AHX 2319	KM 21	95	85	4	16	M105 X 2	0,886
95	AHX 320	KM 22	100	59	4	10	M110 X 2	0,582
	AHX 3120	KM 22	100	64	4	11	M110 X 2	0,650
	AHX 3220	KM 22	100	73	4	11	M110 X 2	0,767
	AHX 2320	KM 22	100	90	4	16	M100 X 2	0,998
105	AHX 322	KM 24	110	63	4	12	M120 X 2	0,663
	AHX 3122	KM 22	110	68	4	11	M120 X 2	0,760
	AH 24122	KM 23	110	82	9	13	M115 X 2	0,730
	AHX 3222 G	KM 24	110	82	4	11	M120 X 2	1,040
	AHX 2322 G	KM 24	110	98	4	16	M120 X 2	1,350


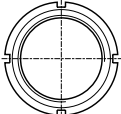

- *Accessories*
- *Accessoires*
- *Zubehör*
- *Accessorios*
- *Accessori*

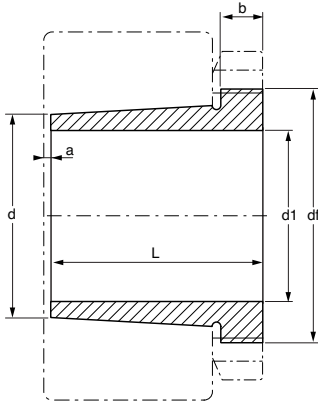
  					
AH 308 AH 2308	KM 9 KM 9			21308 K 22308 K	22208 K
AH 309 AH 2309	KM 10 KM 10			21309 K 22309 K	22209 K
AHX 310 AHX 2310	KM 11 KM 11			21310 K 22310 K	22210 K
AHX 311 AHX 2311	KM 12 KM 12			21311 K 22311 K	22211 K
AHX 312 AHX 2312	KM 13 KM 13			21312 K 22312 K	22212 K
AH 313 G AH 2313 G	KM 14 KM 14			21313 K 22313 K	22213 K
AH 314 G AHX 2314 G	KM 15 KM 15			21314 K 22314 K	22214 K
AH 315 G AHX 2315 G	KM 17 KM 16			21315 K 22315 K	
AH 316 AHX 2316	KM 18 KM 18			21316 K 22316 K	22216 K
AHX 317 AHX 2317	KM 19 KM 19			21317 K 22317 K	22217 K
AHX 318 AHX 3218 AHX 2318	KM 20 KM 20 KM 20			21318 K 23218 K 22318 K	22218 K
AHX 319 AHX 2319	KM 21 KM 21			22219 K 22319 K	
AHX 320 AHX 3120 AHX 3220 AHX 2320	KM 22 KM 22 KM 22 KM 22			22220 K 23120 K 23220 K 22320 K	
AHX 322 AHX 3122 AH 24122 AHX 3222 G AHX 2322 G	KM 24 KM 22 KM 23 KM 24 KM 24			23022 K 22222 K 24122 K 30 23222 K 22322 K	



d1			d	L	a	b	df	
mm			mm	mm	mm	mm	mm	kg
115	AHX 3024	KM 26	120	60	4	13	M130 X 2	0,750
	AH 24024	KM 25	120	73	9	13	M125 X 2	0,650
	AHX 3124	KM 24	120	75	4	12	M130 X 2	0,950
	AHX 3224 G	KM 26	120	90	4	13	M130 X 2	1,300
	AH 24124	KM 26	120	93	9	13	M125 X 2	1,000
	AHX 2324 G	KM 26	120	105	4	17	M130 X 2	1,600
125	AHX 3026	KM 28	130	67	4	14	M140 X 2	0,930
	AHX 3126	KM 26	130	78	4	12	M140 X 2	1,080
	AH 24026	KM 27	130	83	10	14	M135 X 2	0,880
	AH 24126	KM 28	130	94	10	14	M140 X 2	1,150
	AHX 3226 G	KM 28	130	98	4	15	M140 X 2	1,580
	AHX 2326 G	KM 28	130	115	4	19	M140 X 2	1,970
135	AHX 3028	KM 30	140	68	5	14	M150 X 2	1,010
	AH 24028	KM 29	140	83	10	14	M145 X 2	0,910
	AHX 3128	KM 28	140	83	5	14	M150 X 2	1,280
	AH 24128	KM 30	140	99	10	14	M150 X 2	1,250
	AHX 3228 G	KM 30	140	104	5	15	M150 X 2	1,840
	AHX 2328 G	KM 30	140	125	5	20	M150 X 2	2,330
145	AHX 3030	KM 32	150	72	5	15	M160 X 3	1,150
	AH 24030	KM 31	150	90	11	15	M155 X 3	1,040
	AHX 3130 G	KM 33	150	96	5	15	M165 X 3	1,790
	AHX 3230 G	KM 32	150	114	5	17	M160 X 3	2,220
	AH 24130	KM 32	150	115	11	15	M160 X 3	1,560
	AHX 2330 G	KM 32	150	135	5	24	M160 X 3	2,820
150	AH 3032	KM 34	160	77	5	16	M170 X 3	2,060
	AH 24032	KM 34	160	95	11	15	M170 X 3	2,330
	AH 3132 G	KM 32	160	103	5	16	M170 X 3	3,210
	AH 24132	KM 34	160	124	11	15	M170 X 3	3,000
	AH 3232 G	KM 34	160	124	5	20	M170 X 3	4,080
	AH 2332 G	KM 34	160	140	5	24	M170 X 3	4,720
160	AH 3034	KM 36	170	85	5	17	M180 X 3	2,430
	AH 3134 G	KM 34	170	104	5	16	M180 X 3	3,400
	AH 24034	KM 36	170	106	11	16	M180 X 3	2,800
	AH 24134	KM 36	170	125	11	16	M180 X 3	3,210
	AH 3234 G	KM 36	170	134	6	24	M180 X 3	4,800
	AH 2334 G	KM 36	170	146	6	24	M180 X 3	5,250


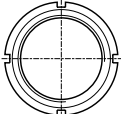

- *Accessories*
- *Accessoires*
- *Zubehör*
- *Accesorios*
- *Accessori*

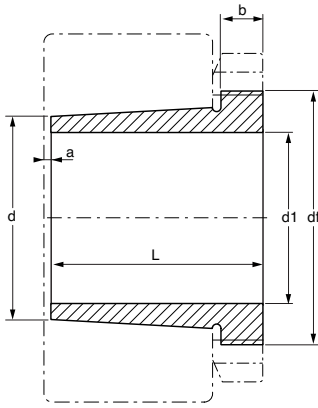
					
AHX 3024 AH 24024 AHX 3124 AHX 3224 G AH 24124 AHX 2324 G	KM 26 KM 25 KM 24 KM 26 KM 26 KM 26			23024 K 24024 K 30 22224 K 23224 K 24124 K 30 22324 K	23124 K
AHX 3026 AHX 3126 AH 24026 AH 24126 AHX 3226 G AHX 2326 G	KM 28 KM 26 KM 27 KM 28 KM 28 KM 28			23026 K 22226 K 24026 K 30 24126 K 30 23226 K 22326 K	23126 K
AHX 3028 AH 24028 AHX 3128 AH 24128 AHX 3228 G AHX 2328 G	KM 30 KM 29 KM 28 KM 30 KM 30 KM 30			23028 K 24028 K 30 22228 K 24128 K 30 23228 K 22328 K	23128 K
AHX 3030 AH 24030 AHX 3130 G AHX 3230 G AH 24130 AHX 2330 G	KM 32 KM 31 KM 33 KM 32 KM 32 KM 32			23030 K 24030 K 30 22230 K 23230 K 24130 K 30 22330 K	
AH 3032 AH 24032 AH 3132 G AH 24132 AH 3232 G AH 2332 G	KM 34 KM 34 KM 32 KM 34 KM 34 KM 34			23032 K 24032 K 30 22232 K 24132 K 30 23232 K 22332 K	23132 K
AH 3034 AH 3134 G AH 24034 AH 24134 AH 3234 G AH 2334 G	KM 36 KM 34 KM 36 KM 36 KM 36 KM 36			23034 K 22234 K 24034 K 30 24134 K 30 23234 K 22334 K	23134 K



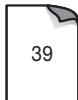
d1			d	L	a	b	df	
mm			mm	mm	mm	mm	mm	kg
170	AH 3036	KM 38	180	92	6	17	M190 X 3	2,810
	AH 2236 G	KM 38	180	105	6	26	M190 X 3	3,390
	AH 24036	KM 38	180	116	11	16	M190 X 3	3,200
	AH 3136 G	KM 36	180	116	6	19	M190 X 3	3,880
	AH 24136	KM 38	180	134	11	16	M190 X 3	3,750
	AH 3236 G	KM 38	180	140	6	25	M190 X 3	5,320
	AH 2336 G	KM 38	180	154	6	26	M190 X 3	5,830
180	AH 3038 G	KM 40	190	96	6	18	M200 X 3	3,320
	AH 2238 G	KM 40	190	112	7	18	M200 X 3	4,200
	AH 24038	KM 40	190	118	13	18	M200 X 3	3,500
	AH 3138 G	KM 38	190	125	6	20	M200 X 3	4,890
	AH 3238 G	KM 40	190	145	7	25	M200 X 3	5,900
	AH 24138	KM 40	190	146	13	18	M200 X 3	4,280
	AH 2338 G	KM 40	190	160	7	26	M200 X 3	6,630
190	AH 3040 G	HM 42T	200	102	6	19	TR210 X 4	3,800
	AH 2240	HM 44T	200	118	7	19	TR220 X 4	4,680
	AH 24040	HM 42T	200	127	13	18	TR210 X 4	3,930
	AH 3140	KM 40	200	134	6	21	TR220 X 4	5,490
	AH 3240	HM 44T	200	153	7	24	TR220 X 4	6,680
	AH 24140	HM 42T	200	158	13	18	TR210 X 4	5,100
	AH 2340	HM 48T	200	170	7	30	TR220 X 4	7,540
200	AOH 3044 G	HM 46T	220	111	6	20	TR230 X 4	7,290
	AOH 2244	HM 48T	220	130	8	20	TR240 X 4	9,100
	AOH 24044	HM 46T	220	138	14	20	TR230 X 4	8,200
	AOH 3144	HM 48T	220	145	6	23	TR240 X 4	10,400
	AOH 24144	HM 46T	220	170	14	20	TR230 X 4	10,500
	AOH 2344	HM 48T	220	181	8	30	TR240 X 4	13,500
220	AOH 3048	HM 52T	240	116	7	21	TR260 X 4	8,750
	AOH 24048	HM 50T	240	138	15	20	TR250 X 4	9,290
	AOH 3148	HM 52T	240	154	7	25	TR260 X 4	12,000
	AOH 24148	HM 52T	240	180	15	20	TR260 X 4	13,000
	AOH 2348	HM 52T	240	189	8	30	TR260 X 4	15,500
240	AOH 3052	HM 56T	260	128	7	23	TR280 X 4	10,700
	AOH 24052 G	HM 56T	260	162	16	22	TR280 X 4	12,700
	AOH 3152 G	HM 56T	260	172	7	26	TR280 X 4	15,500
	AOH 24152	HM 56T	260	202	16	22	TR280 X 4	16,000
	AOH 2352 G	HM 56T	260	205	8	30	TR280 X 4	18,900

- *Accessories*
- *Accessoires*
- *Zubehör*
- *Accesorios*
- *Accessori*


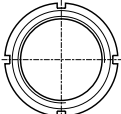

					
AH 3036 AH 2236 G AH 24036 AH 3136 G AH 24136 AH 3236 G AHX 2336 G	KM 38 KM 38 KM 38 KM 36 KM 38 KM 38 KM 38			23036 K 22236 K 24036 K 30 23136 K 24136 K 30 23236 K 22336 K	
AH 3038 G AH 2238 G AH 24038 AH 3138 G AH 3238 G AH 24138 AHX 2338 G	KM 40 KM 40 KM 40 KM 38 KM 40 KM 40 KM 40			23038 K 22238 K 24038K 30 23138 K 23238 K 24138 K 30 22338 K	
AH 3040 G AH 2240 AH 24040 AH 3140 AH 3240 AH 24140 AH 2340	HM 42T HM 44T HM 42T KM 40 HM 44T HM 42T HM 48T			23040 K 22240 K 24040 K 30 23140 K 23240 K 24140 K 30 22340 K	
AOH 3044 G AOH 2244 AOH 24044 AOH 3144 AOH 24144 AOH 2344	HM 46T HM 48T HM 46T HM 48T HM 46T HM 48T			23044 K 22244 K 24044 K 30 23144 K 24144 K 30 22344 K	23244K
AOH 3048 AOH 24048 AOH 3148 AOH 24148 AOH 2348	HM 52T HM 50T HM 52T HM 52T HM 52T			23048 K 24048 K 30 23148 K 24148 K 30 22348 K	23248K
AOH 3052 AOH 24052 G AOH 3152 G AOH 24152 AOH 2352 G	HM 56T HM 56T HM 56T HM 56T HM 56T			23052 K 24052 K 30 23152 K 24152 K 30 23252 K	

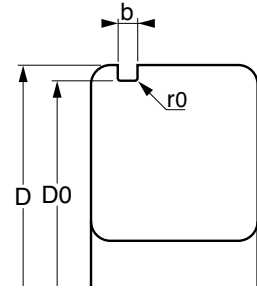
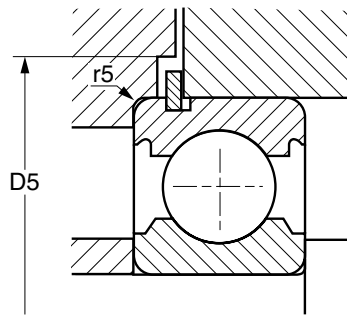
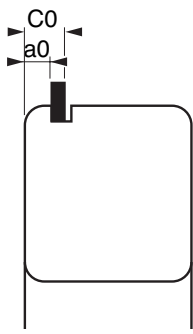


d1			d	L	a	b	df	
mm			mm	mm	mm	mm	mm	kg
260	AOH 3056	HM 3060	280	131	8		TR300 X 4	12,000
	AOH 24056 G	HM 3160	280	162	17		TR300 X 4	13,700
	AOH 3156 G	HM 3160	280	175	8		TR300 X 5	17,100
	AOH 24156	HM 3160	280	202	17		TR300 X 4	17,300
	AOH 2356 G	HM 3160	280	212	8		TR300 X 5	21,300
280	AOH 3060	HM 3064	300	145	8		TR320 X 5	14,400
	AOH 24060 G	HM 3164	300	184	18		TR320 X 5	16,800
	AOH 3160 G	HM 3164	300	192	8		TR320 X 5	20,400
	AOH 24160	HM 3164	300	224	18		TR320 X 5	20,800
	AOH 3260 G	HM 3164	300	228	8		TR330 X 5	23,400
300	AOH 3064 G	HM 3068	320	149	8		TR340 X 5	15,600
	AOH 3164 G	HM 3168	320	209	8		TR340 X 5	24,300
	AOH 24164	HM 3168	320	242	18		TR340 X 5	24,200
320	AOH 3068 G	HM 3072	340	162	9		TR360 X 5	19,100
	AOH 3168 G	HM 3172	340	225	9		TR360 X 5	28,300
	AOH 24168	HM 3172	340	269	19		TR360 X 5	29,000
340	AOH 3072 G	HM 3076	360	167	9		TR380 X 5	20,400
	AOH 3172	HM 3176	360	229	9		TR400 X 5	33,000
	AH 24172 H	HM 3176	360	269	20		TR380 X 5	30,800
360	AOH 3076 G	HM 3080	380	170	10		TR400 X 5	22,700
380	AOH 3080 G	HM 3084	400	183	10		TR420 X 5	26,100



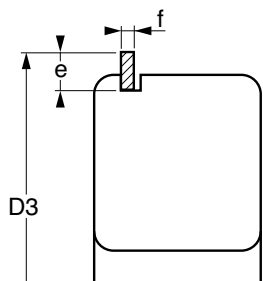
- *Accessories*
- *Accessoires*
- *Zubehör*
- *Accessorios*
- *Accessori*

					
AOH 3056 AOH 24056 G AOH 3156 G AOH 24156 AOH 2356 G	HM 3060 HM 3160 HM 3160 HM 3160 HM 3160			23056 K 24056 K30 23156 K 24156 K30 23256 K	
AOH 3060 AOH 24060 G AOH 3160 G AOH 24160 AOH 3260 G	HM 3064 HM 3164 HM 3164 HM 3164 HM 3164			23060 K 24060 K 30 23160 K 24160 K 30 23260 K	
AOH 3064 G AOH 3164 G AOH 24164	HM 3068 HM 3168 HM 3168			23064 K 23164 K 24164 K30	
AOH 3068 G AOH 3168 G AOH 24168	HM 3072 HM 3172 HM 3172			23068 K 23168 K 24168 K30	
AOH 3072 G AOH 3172 AH 24172 H	HM 3076 HM 3176 HM 3176			23072 K 23172 K 24172 K30	
AOH 3076 G	HM 3080			23076 K	
AOH 3080 G	HM 3084			23080 K	

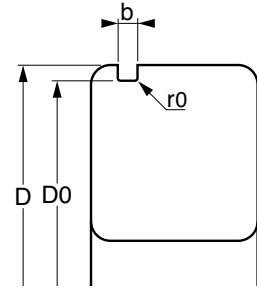
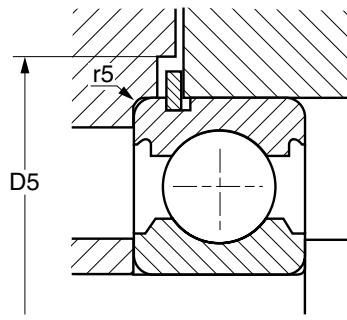
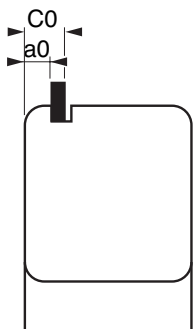


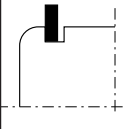

D	R	6000	6200	Spengringe	a0		C0		D5	r5	D0		b		r0	D3 max	
					min	max	min	max			min	max	min	max			
30	R 30		6200	Spengringe	1,90	2,06	2,92	3,18	36,0	0,6	27,91	28,17	1,35	1,65	0,4	34,7	
32	R 32	6002	6201		1,90	2,06	2,92	3,18	38,0	0,3	29,90	30,15	1,35	1,65	0,4	36,7	
					1,90	2,06	2,92	3,18	38,0	0,6	29,90	30,15	1,35	1,65	0,4	36,7	
35	R 35	6003	6202-5202	6300	1,90	2,06	2,92	3,18	41,0	0,3	32,92	33,17	1,35	1,65	0,4	39,7	
					1,90	2,06	2,92	3,18	41,0	0,6	32,92	33,17	1,35	1,65	0,4	39,7	
37	R 37			6301	1,90	2,06	2,92	3,18	42,5	0,6	34,52	34,77	1,35	1,65	0,4	41,3	
40	R 40		6203-5203		1,90	2,06	2,92	3,18	46,5	0,6	37,85	38,10	1,35	1,65	0,4	44,6	
42	R 42	6004		6302	1,90	2,06	2,92	3,18	47,5	0,6	39,50	39,75	1,35	1,65	0,4	46,3	
47	R 47	6005	6204-5204	6303-5303	1,90	2,06	2,92	3,18	54,0	0,6	44,35	44,60	1,35	1,65	0,4	52,7	
					2,31	2,46	3,33	3,58	54,0	0,6	44,35	44,60	1,35	1,65	0,4	52,7	
50	R 50		620/22		2,31	2,46	3,33	3,58	57,0	0,6	47,35	47,60	1,35	1,65	0,4	55,7	
52	R 52		6205-5205	6304-5304	2,31	2,46	3,33	3,58	59,0	0,6	49,48	49,73	1,35	1,65	0,4	57,9	
55	R 55	6006			1,88	2,08	2,90	3,20	62,0	0,6	52,35	52,60	1,35	1,65	0,4	60,7	
62	R 62	6007	6206-5206	6305-5305	6403	1,88	2,08	3,48	3,78	69,0	0,6	59,11	59,61	1,90	2,20	0,6	67,7
						3,07	3,28	4,67	4,98	69,0	0,6	59,11	59,61	1,90	2,20	0,6	67,7
68	R 68	6008			2,29	2,49	3,89	4,19	76,0	0,6	64,31	64,82	1,90	2,20	0,6	74,6	
72	R 72		6207-5207	6306-5306	6404	3,07	3,28	4,67	4,98	80,0	0,6	68,30	68,81	1,90	2,20	0,6	78,6
75	R 75	6009			2,29	2,49	3,89	4,19	83,0	0,6	71,32	71,83	1,90	2,20	0,6	81,6	
80	R 80	6010	6208-5208	6307-5307	6405	2,29	2,49	3,89	4,19	88,0	0,6	76,30	76,81	1,90	2,20	0,6	86,6
						3,07	3,28	4,67	4,98	88,0	0,6	76,30	76,81	1,90	2,20	0,6	86,6
85	R 85		6209-5209			3,07	3,28	4,67	4,98	93,0	0,6	81,31	81,81	1,90	2,20	0,6	91,6
90	R 90	6011	6210-5210	6308-5308	6406	2,67	2,87	5,03	5,33	97,5	0,6	86,28	86,79	2,70	3,00	0,6	96,5
						3,07	3,28	5,43	5,74	97,5	0,6	86,28	86,79	2,70	3,00	0,6	96,5
95	R 95	6012				2,67	2,87	5,03	5,33	103,0	0,6	91,31	91,82	2,70	3,00	0,6	101,6

- *Accessories*
- *Accessoires*
- *Zubehör*
- *Accesorios*
- *Accessori*

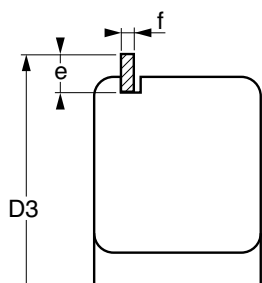


	e		f	
	min	max	min	max
	mm	mm	mm	mm
R 30	3,10	3,25	1,02	1,12
R 32	3,10 3,10	3,25 3,25	1,02 1,02	1,12 1,12
R 35	3,10 3,10	3,25 3,25	1,02 1,02	1,12 1,12
R 37	3,10	3,25	1,02	1,12
R 40	3,10	3,25	1,02	1,12
R 42	3,10	3,25	1,02	1,12
R 47	3,89 3,89	4,04 4,04	1,02 1,02	1,12 1,12
R 50	3,89	4,04	1,02	1,12
R 52	3,89	4,04	1,02	1,12
R 55	3,89	4,04	1,02	1,12
R 62	3,89 3,89	4,04 4,04	1,60 1,60	1,70 1,70
R 68	4,70	4,85	1,60	1,70
R 72	4,70	4,85	1,60	1,70
R 75	4,70	4,85	1,60	1,70
R 80	4,70 4,70	4,85 4,85	1,60 1,60	1,70 1,70
R 85	4,70	4,85	1,60	1,70
R 90	4,70 4,70	4,85 4,85	2,36 2,36	2,46 2,46
R 95	4,70	4,85	2,36	2,46

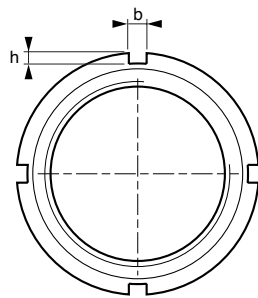
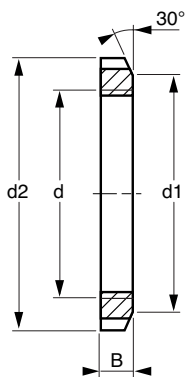


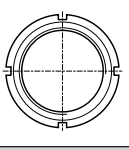
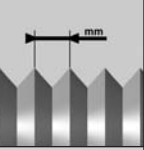

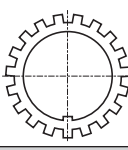
D						a0		C0		D5	r5	D0		b		r0	D3
		min	max	min	max	min	max	min	max	min	max	min	max	min	max	min	max
mm					mm	mm	mm	mm	mm	mm	mm	mm	mm	mm	mm	mm	mm
100	R 100	6013	6211-5211	6309-5309	6407	2,67 3,07	2,87 3,28	5,03 5,43	5,33 5,74	107,5 107,5	0,6 0,6	96,29 96,29	96,80 96,80	2,70 2,70	3,00 3,00	0,6 0,6	106,5 106,5
110	R 110	6014	6212-5212	6310-5310	6408	2,67 3,07	2,87 3,28	5,03 5,43	5,33 5,74	117,5 118,0	0,6 0,6	106,30 106,30	106,81 106,81	2,70 2,70	3,00 3,00	0,6 0,6	116,6 116,6
115	R 115	6015				2,67	2,87	5,03	5,33	123,0	0,6	111,30	111,81	2,70	3,00	0,6	121,6
120	R 120		6213-5213	6311-5311	6409	3,86	4,06	6,58	6,88	131,0	0,6	114,71	115,21	3,10	3,40	0,6	129,7
125	R 125	6016	6214-5214			2,67 3,86	2,87 4,06	5,39 6,58	5,69 6,88	136,0 136,0	0,6 0,6	119,71 119,71	120,22 120,22	3,10 3,10	3,40 3,40	0,6 0,6	134,7 134,7
130	R 130	6017	6215	6312-5312	6410	2,67 3,86	2,87 4,06	5,39 5,58	5,69 6,88	141,0 141,0	0,6 0,6	124,71 124,71	125,22 125,22	3,10 3,10	3,40 3,40	0,6 0,6	139,7 139,7
140	R 140	6018	6216	6313-5313	6411	3,45 4,65	3,71 4,90	6,17 7,37	6,53 7,72	151,0 151,0	0,6 0,6	134,72 134,72	135,23 135,23	3,10 3,10	3,40 3,40	0,6 0,6	149,7 149,7
145	R 145	6019				3,45	3,71	6,17	6,53	156,0	0,6	139,73	140,23	3,10	3,40	0,6	154,7
150	R 150	6020	6217	6314	6412	3,45 4,65	3,71 4,90	6,17 7,37	6,53 7,72	161,0 161,0	0,6 0,6	144,73 144,73	145,24 145,24	3,10 3,10	3,40 3,40	0,6 0,6	159,7 159,7
160	R 160	6021	6218	6315	6413	3,45 4,65	3,71 4,90	6,17 7,37	6,53 7,72	171,0 171,0	0,6 0,6	154,71 154,71	155,22 155,22	3,10 3,10	3,40 3,40	0,6 0,6	169,7 169,7
170	R 170	6022	6219	6316		3,45 5,44	3,71 5,69	6,45 8,44	6,81 8,79	184,0 184,0	0,6 0,6	163,14 163,14	163,65 163,65	3,50 3,50	3,80 3,80	0,6 0,6	182,9 182,9
180	R 180	6024	6220	6317	6414	3,45 5,44	3,71 5,69	6,45 8,44	6,81 8,79	194,0 194,0	0,6 0,6	173,15 173,15	173,66 173,66	3,50 3,50	3,80 3,80	0,6 0,6	192,9 192,9
190	R 190		6221	6318	6415	5,44	5,69	8,44	8,79	204,0	0,6	183,13	183,64	3,50	3,80	0,6	202,9
200	R 200	6026	6222	6319	6416	5,44	5,69	8,44	8,79	214,0	0,6	193,14	193,65	3,50	3,80	0,6	212,9

- *Accessories*
- *Accessoires*
- *Zubehör*
- *Accesorios*
- *Accessori*

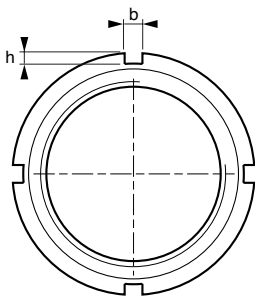
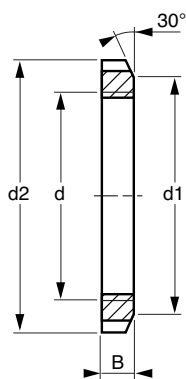


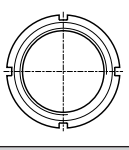
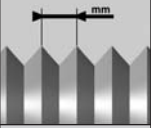

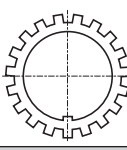
	e		f	
	min	max	min	max
	mm	mm	mm	mm
R 100	4,70 4,70	4,85 4,85	2,36 2,36	2,46 2,46
R 110	4,70 4,70	4,85 4,85	2,36 2,36	2,46 2,46
R 115	4,70	4,85	2,36	2,46
R 120	7,06	7,21	2,72	2,82
R 125	7,06 7,06	7,21 7,21	2,72 2,72	2,82 2,82
R 130	7,06 7,06	7,21 7,21	2,72 2,72	2,82 2,82
R 140	7,06 7,06	7,21 7,21	2,72 2,72	2,82 2,82
R 145	7,06	7,21	2,72	2,82
R 150	7,06 7,06	7,21 7,21	2,72 2,72	2,82 2,82
R 160	7,06 7,06	7,21 7,21	2,72 2,72	2,82 2,82
R 170	9,45 9,45	9,6 9,6	3,00 3,00	3,10 3,10
R 180	9,45 9,45	9,6 9,6	3,00 3,00	3,10 3,10
R 190	9,45	9,6	3,00	3,10
R 200	9,45	9,6	3,00	3,10

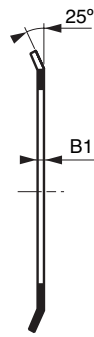
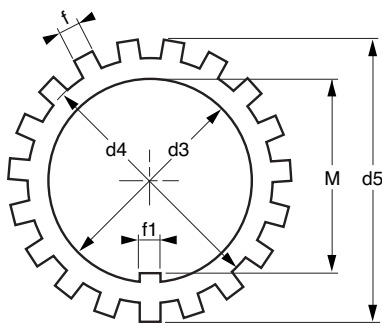



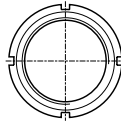
d			d2	d1	B	b	h		
mm			mm	mm	mm	mm	mm	kg ≈	
10	KM 0	M10 X 0,75	18	13,5	4	3	2,0	0,005	MB 0
12	KM 1	M12 X 1,00	22	17,0	4	3	2,0	0,007	MB 1
15	KM 2	M15 X 1,00	25	21,0	5	4	2,0	0,010	MB 2
17	KM 3	M17 X 1,00	28	24,0	5	4	2,0	0,013	MB 3
20	KM 4	M20 X 1,00	32	26,0	6	4	2,0	0,019	MB 4
25	KM 5	M25 X 1,50	38	32,0	7	5	2,0	0,025	MB 5
30	KM 6	M30 X 1,50	45	38,0	7	5	2,0	0,043	MB 6
35	KM 7	M35 X 1,50	52	44,0	8	5	2,0	0,053	MB 7
40	KM 8	M40 X 1,50	58	50,0	9	6	2,5	0,085	MB 8
45	KM 9	M45 X 1,50	65	56,0	10	6	2,5	0,120	MB 9
50	KM 10	M50 X 1,50	70	61,0	11	6	2,5	0,150	MB 10
55	KM 11	M55 X 2,00	75	67,0	11	7	3,0	0,160	MB 11
60	KM 12	M60 X 2,00	80	73,0	11	7	3,0	0,170	MB 12
65	KM 13	M65 X 2,00	85	79,0	12	7	3,0	0,200	MB 13
70	KM 14	M70 X 2,00	92	85,0	12	8	3,5	0,240	MB 14
75	KM 15	M75 X 2,00	98	90,0	13	8	3,5	0,290	MB 15
80	KM 16	M80 X 2,00	105	95,0	15	8	3,5	0,400	MB 16
85	KM 17	M85 X 2,00	110	102,0	16	8	3,5	0,450	MB 17
90	KM 18	M90 X 2,00	120	108,0	16	10	4,0	0,560	MB 18
95	KM 19	M95 X 2,00	125	113,0	17	10	4,0	0,660	MB 19
100	KM 20	M100 X 2,00	130	120,0	18	10	4,0	0,700	MB 20
105	KM 21	M105 X 2,00	140	126,0	18	12	5,0	0,850	MB 21
110	KM 22	M110 X 2,00	145	133,0	19	12	5,0	0,970	MB 22
115	KM 23	M115 X 2,00	150	137,0	19	12	5,0	1,010	MB 23
120	KM 24	M120 X 2,00	155	138,0	20	12	5,0	1,080	MB 24
125	KM 25	M125 X 2,00	160	148,0	21	12	5,0	1,190	MB 25
130	KM 26	M130 X 2,00	165	149,0	21	12	5,0	1,250	MB 26
135	KM 27	M135 X 2,00	175	160,0	22	14	6,0	1,550	MB 27
140	KM 28	M140 X 2,00	180	160,0	22	14	6,0	1,560	MB 28
145	KM 29	M145 X 2,00	190	172,0	24	14	6,0	2,000	MB 29

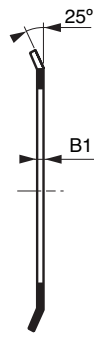
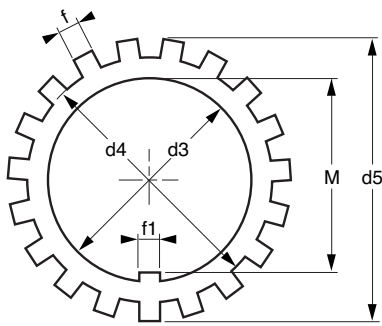
- *Accessories*
- *Accessoires*
- *Zubehör*
- *Accesorios*
- *Accessori*




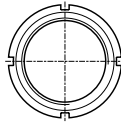
d			d2	d1	B	b	h		
mm			mm	mm	mm	mm	mm	kg ≈	
150	KM 30	M150 X 2,00	195	171	24	14	6,0	2,030	MB 30
155	KM 31	M155 X 3,00	200	182	25	16	7,0	2,210	MB 31
160	KM 32	M160 X 3,00	210	182	25	16	7,0	2,590	MB 32
165	KM 33	M165 X 3,00	210	193	26	16	7,0	2,430	MB 33
170	KM 34	M170 X 3,00	220	193	26	16	7,0	2,800	MB 34
180	KM 36	M180 X 3,00	230	203	27	18	8,0	3,070	MB 36
190	KM 38	M190 X 3,00	240	214	28	18	8,0	3,390	MB 38
200	KM 40	M200 X 3,00	250	226	29	18	8,0	3,690	MB 40
205	HML 41T	TR205 X 4,00	250	232	30	18	8,0	3,430	
210	HM 42T	TR210 X 4,00	270	238	30	20	10,0	4,750	
215	HML 43T	TR215 X 4,00	260	242	30	20	9,0	3,720	
220	HM 3044	TR220 X 4,00	260	242	30	20	9,0	3,090	MS 3044
	HM 44T	TR220 X 4,00	280	250	32	20	10,0	5,350	MB 44
230	HM 46T	TR230 X 4,00	290	260	34	20	10,0	5,800	
240	HM 3048	TR240 X 4,00	290	270	34	20	10,0	5,160	MS 3048
	HM 48T	TR240 X 4,00	300	270	34	20	10,0	6,200	MB 48
260	HM 3052	TR260 X 4,00	310	290	34	20	10,0	5,670	MS 3052
250	HM 50T	TR250 X 4,00	320	290	35	20	10,0	7,000	
260	HM 52T	TR260 X 4,00	330	300	35	24	12,0	8,400	MB 52
280	HM 3056	TR280 X 4,00	330	310	38	24	10,0	6,780	MS 3056
	HM 56T	TR280 X 4,00	350	320	36	24	12,0	9,600	MB 56
300	HM 3060	TR300 X 4,00	360	336	42	24	12,0	9,620	MS 3060
	HM 3160	TR300 X 4,00	380	340	40	24	12,0	11,700	MS 3160
320	HM 3064	TR320 X 5,00	380	356	42	24	12,0	9,940	MS 3064
	HM 3164	TR320 X 5,00	400	360	42	24	12,0	13,000	MS 3164
340	HM 3068	TR340 X 5,00	400	376	45	24	12,0	11,700	MS 3068
	HM 3168	TR340 X 5,00	440	400	55	28	15,0	23,000	MS 3168
360	HM 3072	TR360 X 5,00	420	394	45	28	13,0	12,000	MS 3072
	HM 3172	TR360 X 5,00	460	420	58	28	15,0	25,000	MS 3172
380	HM 3076	TR380 X 5,00	450	422	48	28	14,0	14,900	MS 3076
	HM 3176	TR380 X 5,00	490	440	60	32	18,0	30,800	MS 3176
400	HM 3080	TR400 X 5,00	470	442	52	28	14,0	16,900	MS 3080
420	HM 3084	TR420 X 5,00	490	462	52	32	14,0	17,400	MS 3084



d3		d5	d4	f1 max	M	f max	B1		
mm		mm	mm	mm	mm	mm	mm	kg/100 ≈	
10	MB 0	21	13,5	3	8,50	3	1,00	0,130	KM 0
12	MB 1	25	17,0	3	10,50	3	1,00	0,200	KM 1
15	MB 2	28	21,0	4	13,50	4	1,00	0,300	KM 2
17	MB 3	32	24,0	4	15,50	4	1,00	0,300	KM 3
20	MB 4	36	26,0	4	18,50	4	1,00	0,400	KM 4
25	MB 5	42	32,0	24	23,00	5	1,25	0,600	KM 5
30	MB 6	49	38,0	5	27,50	5	1,25	0,800	KM 6
35	MB 7	57	44,0	5	32,50	5	1,25	1,100	KM 7
40	MB 8	62	50,0	6	37,50	6	1,25	1,300	KM 8
45	MB 9	69	56,0	6	42,50	6	1,25	1,500	KM 9
50	MB 10	74	61,0	6	47,50	6	1,25	1,600	KM 10
55	MB 11	81	67,0	7	52,50	7	1,50	2,200	KM 11
60	MB 12	86	73,0	7	57,50	7	1,50	2,500	KM 12
65	MB 13	92	79,0	7	62,50	7	1,50	3,000	KM 13
70	MB 14	98	85,0	8	66,50	8	1,50	3,300	KM 14
75	MB 15	104	90,0	8	71,50	8	1,50	3,600	KM 15
80	MB 16	112	95,0	8	76,50	8	1,75	4,600	KM 16
85	MB 17	119	102,0	8	81,50	8	1,75	5,300	KM 17
90	MB 18	126	108,0	10	86,50	10	1,75	6,200	KM 18
95	MB 19	133	113,0	10	91,50	10	1,75	6,700	KM 19
100	MB 20	142	120,0	10	96,50	10	1,75	7,700	KM 20
105	MB 21	145	126,0	12	100,50	12	1,75	8,300	KM 21
110	MB 22	154	133,0	12	105,50	12	1,75	9,400	KM 22
115	MB 23	159	137,0	12	110,50	12	2,00	10,800	KM 23
120	MB 24	164	138,0	12	115,00	12	2,00	10,800	KM 24
125	MB 25	170	148,0	12	120,00	12	2,00	11,800	KM 25
130	MB 26	175	149,0	12	125,00	12	2,00	11,500	KM 26
140	MB 28	192	160,0	14	130,00	14	2,00	14,200	KM 28
150	MB 30	205	171,0	14	135,00	14	2,00	18,000	KM 30
160	MB 32	217	182,0	16	140,00	14	2,50	22,900	KM 32
170	MB 34	232	193,0	16	145,00	14	2,50	24,700	KM 34
180	MB 36	242	203,0	18	147,50	16	2,50	26,800	KM 36
190	MB 38	252	214,0	18	154,00	16	2,50	27,800	KM 38
200	MB 40	262	226,0	18	157,50	16	2,50	29,300	KM 40
	MBL 40	245	222,0	20	194,00	18	2,50	22,000	KML 40
220	MB 44	292	250,0	20	164,00	16	3,00	35,000	HM 44T
240	MB 48	312	270,0	20	174,00	18	3,00	45,000	HM 48T
260	MB 52	342	300,0	24	184,00	18	3,00	65,000	HM 52T
280	MB 56	362	320,0	24	194,00	18	3,00	100,500	HM 56T



- *Accessories*
- *Accessoires*
- *Zubehör*
- *Accessorios*
- *Accessori*

d3		d5	d4	f1 max	M	f max	B1		
mm		mm	mm	mm	mm	mm	mm	kg/100 ≈	
7	MS 3044	20	12				4,00	0,210	HM 3044
9	MS 3048	20	12				4,00	0,230	HM 3048
9	MS 3052	20	12				4,00	0,230	HM 3052
9	MS 3056	24	12				4,00	0,300	HM 3056
9	MS 3060	24	12				4,00	0,320	HM 3060
9	MS 3064	24	15				5,00	0,460	HM 3064
9	MS 3068	24	15				5,00	0,460	HM 3068
9	MS 3072	28	15				5,00	0,500	HM 3072
12	MS 3076	28	15				5,00	0,530	HM 3076
12	MS 3080	28	15				5,00	0,530	HM 3080
12	MS 3160	24	12				4,00	0,380	HM 3160
12	MS 3164	24	15				5,00	0,540	HM 3164
14	MS 3168	28	15				5,00	0,670	HM 3168
14	MS 3172	28	15				5,00	0,670	HM 3172

